



MARK PESTRELLA, Director

COUNTY OF LOS ANGELES

DEPARTMENT OF PUBLIC WORKS

"To Enrich Lives Through Effective and Caring Service"

900 SOUTH FREMONT AVENUE
ALHAMBRA, CALIFORNIA 91803-1331
Telephone: (626) 458-5100
<http://dpw.lacounty.gov>

ADDRESS ALL CORRESPONDENCE TO:
P.O. BOX 1460
ALHAMBRA, CALIFORNIA 91802-1460

February 23, 2022

IN REPLY PLEASE

REFER TO FILE: **EP-5**

Mr. Chris Coyle
General Manager
Republic Services, Inc.
Sunshine Canyon Landfill
14747 San Fernando Road
Sylmar, CA 91342-1021

**SUNSHINE CANYON CITY/COUNTY LANDFILL
CONDITIONAL USE PERMIT NO. 00-194-(5)
AUTHORIZATION TO IMPORT CLEAN SOIL**

Dear Mr. Coyle:

Public Works has reviewed Republic Services' request dated November 19, 2021, (Enclosure 1), soil importation submittal dated December 15, 2021, (Enclosure 2), and updated submittal dated January 31, 2022, (Enclosure 3), in conjunction with the First Semi-Annual Soil Importation Summary and the requirements set forth in Public Works June 15, 2021, letter (Enclosure 4). The request seeks Public Works' approval for an increase in soil importation to supplement previous soil importation approval of 2,500 tons per day (tpd) as approved by Public Works on June 15, 2021.

Pursuant to Conditional Use Permit (CUP) 00-194-(5), Conditions 1.D and 23.E, which require Republic Services to obtain prior authorization from Public Works for the importation and acceptance of clean soil material for beneficial use, Public Works has reviewed your request and hereby approves Republic Services to import an additional 500 tpd of clean soil to Sunshine Canyon Landfill for a maximum of 3,000 tpd. Approval for an additional 500 tpd, in addition to the previous approval for importation of 2,500 tpd, is granted for the sole purpose of making additional soil available for Republic Services for the application of soil cover over the weekend, as required by Sections 3a and 3b of Public Works January 15, 2019, approval for the use of Alternative Daily Cover (ADC) (Enclosure 5).

As such, Republic Services is required to prioritize the use of the imported soil for the purposes of cover on Saturdays in order to reduce and/or eliminate the odor nuisance

impacting the community, and to protect public health and safety. However, this approval does not preclude Republic Services from utilizing the remaining volume of soil for other beneficial uses once the Landfill has achieved full compliance with the January 15, 2019, requirements.

Republic Services must come into compliance with the January 15, 2019, working face soil cover requirements immediately, or Public Works will refer the matter to the Department of Regional Planning for the issuance of a Notice of Violation.

In addition, this approval is subject to the following conditions:

1. The quantity of soil to be imported shall not exceed the following:
 - 3,000 tons per day or 18,000 tons per week.
 - The duration of this project approval is for a total period of 5-years, starting on June 15, 2021, and will terminate on June 14, 2026, unless otherwise terminated sooner by Public Works.
 - The quantity of soil imported (tonnage) shall be included as part of the total permitted daily and weekly tonnage capacity of materials (Solid Waste, Inert Debris, and Beneficial Use Materials). Pursuant to the CUP, in no event shall the daily tonnage of all materials received by the Landfill exceed 12,100 tons on any given day, six working days per week, nor the total permitted weekly tonnage limit of 72,600 tons per week.
2. The soil importation shall occur during the normal operating hours of the site from Monday to Saturday.
3. All incoming and departing truck routes associated with this soil importation project shall be limited to the same route from the Interstate 5 Freeway to the Landfill as do loads of refuse, by taking the Roxford Exit and San Fernando Road to the Landfill entrance.
4. The imported soil shall be placed adjacent to the working area for immediate usage in a designated location, or if soil is not needed at the working area, it shall be taken to a designated stockpile location as defined in the Landfill's Joint Technical Document. Additionally, all stockpile areas shall be vegetated if left unused longer than 180 days and will require soil stockpile grading and drainage plans to be provided within 30 days from the date of this letter for further review and approval (pursuant to CUP Condition 37).

5. Republic Services shall comply with the currently approved Fugitive Dust Control Program to minimize dust resulting from the importation project.
6. Republic Services shall follow all applicable local, State, and Federal standards and requirements for the importation of clean soil from off-site sources, including but not limited to, the approved Waste Load Checking Program and the Waste Discharge Requirements issued by the California Regional Water Quality Control Board to ensure the imported soil's quality is acceptable under this program and permit.
7. Republic Services shall keep records of all soil materials received, including but not limited to, the sources of all imported soil, quantities accepted/imported and use and purpose of onsite soil, delivery schedules, usage schedules, and the amount of soil that is stockpiled, beneficially used, and disposed of.
8. Republic Services shall submit summaries of these records on a quarterly basis, including a stockpile location map, to Public Works Environmental Programs Division for the duration of this project.
9. Republic Services shall submit monthly reports on the usage of the import soil tonnage including the status of compliance with the weekend soil cover requirements as stated in Sections 3a and 3b of Public Works' January 15, 2019, approval for the ADC, and other beneficial uses. The first monthly report shall be submitted within 30 days of this letter.
10. In the event that Public Works: 1) approves a temporary 48-hour Enviro-cover pilot program, or 2) approves the 48-hour Enviro-cover material for permanent use, and/or 3) grants a waiver of the soil cover requirement (Sections 3a and 3b of Public Works' January 15, 2019, approval), the approval for an additional tonnage of 500 tons per day shall be terminated. In such case the allowed soil importation shall remain at a maximum rate of 2,500 tpd, as approved on Public Works' letter dated June 15, 2021.
11. This soil importation approval of additional 500 tpd shall terminate if Republic Services fails to comply with the January 15, 2019, ADC requirements within 30 days commencing on the date of this letter. Going forward, if Republic Services is found to be out of compliance with the January 15, 2019, ADC requirement, the additional 500 tpd shall terminate.

Mr. Chris Coyle
February 23, 2022
Page 4

The Director of Public Works or his designee, at his/her sole discretion, may rescind or terminate this approval if Public Works determines that any of the conditions of approval has been violated and/or that such termination is necessary to protect public health, safety, welfare, and/or the environment. Public Works also reserves the authority to modify or apply additional measures for the soil importation approval in the future, as deemed necessary, in accordance with Condition 45N of the Landfill's Conditional Use Permit.

If you have any questions, please contact me or your staff may contact Mr. David Nguyen at (626) 458-5189 or dnguyen@dpw.lacounty.gov, Monday through Thursday, 7 a.m. to 5:30 p.m.

Very truly yours,

MARK PESTRELLA, PE
Director of Public Works



PATRICK HOLLAND
Principal Engineer
Environmental Programs Division

MA:kp
P:\SECKP\EP5\SCL IMPORT SOIL APPROVAL LETTER

Enc.

cc: Department of Regional Planning (Edgar De La Torre, Alex Garcia, Maria Masis)
City of Los Angeles Department of City Planning (Tiffany Butler, Nicholas Hendricks, Lisa Webber)
Sunshine Canyon Landfill Community Advisory Committee (Wayde Hunter)
Sunshine Canyon Landfill Technical Advisory Committee (Jon Sanabria, Lisa Webber)
Sunshine Canyon Landfill Local Enforcement Agency (Dorcas Hanson-Lugo, Shikari Nakagawa-Ota, David Thompson)
Each Member of the Los Angeles County Solid Waste Management Committee
Integrated Waste Management Task Force

Enclosure 1



14747 San Fernando Road
Sylmar, CA 91342

November 19, 2021

Mr. Martin Aiyetiwa
Senior Civil Engineer - Environmental Programs Division
900 South Fremont Avenue
Alhambra, CA 91803-1331

**Subject: Clean Soil Material Importation and Stockpile – Sunshine Canyon City/County Landfill
Conditional Use Permit No. 00-194-(5)**

Dear Mr. Aiyetiwa:

As you are aware, Sunshine Canyon Landfill (SCL) obtained approval from County of Los Angeles Department of Public Works (DPW) to import 2,500 tons per day (tpd) of clean soil for beneficial use at the landfill, per your letter dated June 15, 2021.

As previously discussed with DPW, Sunshine Canyon Landfill has historically incurred a large soil deficit. This deficit was created in part by past operational practices imposed by permit conditions which led to the original request for import (July 2020). Since that submittal, the site has made some minor operational changes which have resulted in an increase in the need for soil.

The site is now operating two working faces daily to accommodate the volume of incoming waste, due to the configuration and size of the cells with available airspace. This, in addition to other daily, routine operations to maintain and keep the site in compliance deplete the available on-site soil supply more quickly. Furthermore, we anticipate that soil available for import will be significantly reduced over the coming winter months as rain slows or stops groundwork altogether. Therefore, it is vital the site maintains an adequate stockpile of soil available for both daily cover and other operational needs at all times.

SCL would like to formally request approval for an increase in soil import to a total of 3,500 tpd or 21,000 tons per week. No changes are requested to any other conditions listed in the June 15, 2021 approval.

If you have any questions or require any additional information, please contact Chris Coyle at 818-362-2141 or Valorie Moore at 818-362-2145.

Sincerely,



14747 San Fernando Road
Sylmar, CA 91342

Sunshine Canyon Landfill



Chris Coyle
General Manager



Date Signed

Enclosure 2

December 15, 2021

Martins Aiyetiwa
Los Angeles County Public Works
900 South Fremont Avenue
Alhambra, CA 91803-1331

Subject: Sunshine Canyon Landfill – First Semi-Annual Soil Importation Summary

Dear Mr. Aiyetiwa:

Sunshine Canyon Landfill (SCL) obtained approval from County of Los Angeles Department of Public Works (DPW) to import up to 2,500 tons per day of clean soil material for beneficial use per your letter dated June 15, 2021. Within that approval, a condition was included requiring SCL to provide monthly summaries related to the incoming material on a semi-annual basis, with the first report due six months after date of approval (Condition #s 7 and 8).

The following is the first Semi-Annual Summary, which covers all requested information regarding daily soil import activities from June 15, 2021 through November 30, 2021.

Table 1. June 2021 Daily Import¹

Date	Quantity (Tons)	Stockpiled (Y/N)	Use of Soil	Dates of Usage	Stockpile Location
21-Jun	1459.6	N	Daily Cover/Landfill Maintenance	Week of 6/21/21	N/A
22-Jun	2047.81	N	Daily Cover/Landfill Maintenance	Week of 6/21/21	N/A
23-Jun	2009.79	N	Daily Cover/Landfill Maintenance	Week of 6/21/21	N/A
24-Jun	1935.33	N	Daily Cover/Landfill Maintenance	Week of 6/21/21	N/A
25-Jun	1961.93	N	Daily Cover/Landfill Maintenance	Week of 6/21/21	N/A
28-Jun	1396.26	N	Daily Cover/Landfill Maintenance	Week of 6/28/21	N/A

29-Jun	1646.86	N	Daily Cover/Landfill Maintenance	Week of 6/28/21	N/A
30-Jun	1659.49	N	Daily Cover/Landfill Maintenance	Week of 6/28/21	N/A
TOTAL	14117.07				

¹June 21 through June 30 material was received from: LA Reservoir

Table 2. July 2021 Daily Import²

Date	Quantity (Tons)	Stockpiled (Y/N)	Use of Soil	Dates of Usage	Stockpile Location
1-Jul	2067.51	N	Daily Cover/Landfill Maintenance	Week of 6/28/21	N/A
2-Jul	2029.76	N	Daily Cover/Landfill Maintenance	Week of 6/28/21	N/A
6-Jul	2048.87	N	Daily Cover/Landfill Maintenance	Week of 7/5/21	N/A
7-Jul	1965.95	N	Daily Cover/Landfill Maintenance	Week of 7/5/21	N/A
8-Jul	2227.25	N	Daily Cover/Landfill Maintenance	Week of 7/5/21	N/A
9-Jul	2059.1	N	Daily Cover/Landfill Maintenance	Week of 7/5/21	N/A
12-Jul	1969.02	N	Daily Cover/Landfill Maintenance	Week of 7/12/21	N/A
13-Jul	1995.4	N	Daily Cover/Landfill Maintenance	Week of 7/12/21	N/A

14-Jul	1745.71	N	Daily Cover/Landfill Maintenance	Week of 7/12/21	N/A
15-Jul	1940.66	N	Daily Cover/Landfill Maintenance	Week of 7/12/21	N/A
16-Jul	1936.05	N	Daily Cover/Landfill Maintenance	Week of 7/12/21	N/A
19-Jul	1930.95	N	Daily Cover/Landfill Maintenance	Week of 7/19/21	N/A
20-Jul	1867.02	N	Daily Cover/Landfill Maintenance	Week of 7/19/21	N/A
21-Jul	1884.65	N	Daily Cover/Landfill Maintenance	Week of 7/19/21	N/A
22-Jul	1911.76	N	Daily Cover/Landfill Maintenance	Week of 7/19/21	N/A
23-Jul	2035.83	N	Daily Cover/Landfill Maintenance	Week of 7/26/21	N/A
26-Jul	2216.06	N	Daily Cover/Landfill Maintenance	Week of 7/26/21	N/A
27-Jul	1824.98	N	Daily Cover/Landfill Maintenance	Week of 7/26/21	N/A
28-Jul	1829.75	N	Daily Cover/Landfill Maintenance	Week of 7/26/21	N/A
29-Jul	1977.93	N	Daily Cover/Landfill Maintenance	Week of 7/26/21	N/A

30-Jul	1907.42	N	Daily Cover/Landfill Maintenance	Week of 7/26/21	N/A
TOTAL	41371.63				

²From July 1 through July 31 material was received from: LA Reservoir

Table 3. August 2021 Daily Import³

Date	Quantity (Tons)	Stockpiled (Y/N)	Use of Soil	Dates of Usage	Stockpile Location
2-Aug	1857.18	N	Daily Cover/Landfill Maintenance	Week of 8/2/21	N/A
3-Aug	2039.63	N	Daily Cover/Landfill Maintenance	Week of 8/2/21	N/A
4-Aug	1995.02	N	Daily Cover/Landfill Maintenance	Week of 8/2/21	N/A
5-Aug	1952.7	N	Daily Cover/Landfill Maintenance	Week of 8/2/21	N/A
6-Aug	1858.22	N	Daily Cover/Landfill Maintenance	Week of 8/2/21	N/A
9-Aug	2015.43	N	Daily Cover/Landfill Maintenance	Week of 8/9/21	N/A
10- Aug	1949.33	N	Daily Cover/Landfill Maintenance	Week of 8/9/21	N/A
11- Aug	1203	N	Daily Cover/Landfill Maintenance	Week of 8/9/21	N/A
24- Aug	167.47	N	Daily Cover/Landfill Maintenance	Week of 8/23/21	N/A

25-Aug	145.27	N	Daily Cover/Landfill Maintenance	Week of 8/23/21	N/A
26-Aug	1017.995	N	Daily Cover/Landfill Maintenance	Week of 8/23/21	N/A
27-Aug	961.02	N	Daily Cover/Landfill Maintenance	Week of 8/23/21	N/A
30-Aug	146.49	N	Daily Cover/Landfill Maintenance	Week of 8/30/21	N/A
31-Aug	251.65	N	Daily Cover/Landfill Maintenance	Week of 8/30/21	N/A
TOTAL	17560.405				

³From August 1 through August 31 material was received from LA Reservoir, Quest, and CWS

Table 4. September 2021 Daily Import⁴

Date	Quantity (Tons)	Stockpiled (Y/N)	Use of Soil	Dates of Usage	Stockpile Location
1-Sep	868.33	N	Daily Cover/Landfill Maintenance	Week of 8/30/21	N/A
2-Sep	622.2	N	Daily Cover/Landfill Maintenance	Week of 8/30/21	N/A
3-Sep	451.12	N	Daily Cover/Landfill Maintenance	Week of 8/30/21	N/A
4-Sep	26.52	N	Daily Cover/Landfill Maintenance	Week of 8/30/21	N/A

7-Sep	1360.22	N	Daily Cover/Landfill Maintenance	Week of 9/6/21	N/A
8-Sep	534.3	N	Daily Cover/Landfill Maintenance	Week of 9/6/21	N/A
9-Sep	904.99	N	Daily Cover/Landfill Maintenance	Week of 9/6/21	N/A
10-Sep	938.05	N	Daily Cover/Landfill Maintenance	Week of 9/6/21	N/A
11-Sep	44.2	N	Daily Cover/Landfill Maintenance	Week of 9/6/21	N/A
13-Sep	1122.3	N	Daily Cover/Landfill Maintenance	Week of 9/13/21	N/A
14-Sep	865.69	N	Daily Cover/Landfill Maintenance	Week of 9/13/21	N/A
15-Sep	547.86	N	Daily Cover/Landfill Maintenance	Week of 9/13/21	N/A
16-Sep	818.65	N	Daily Cover/Landfill Maintenance	Week of 9/13/21	N/A
17-Sep	1152.68	N	Daily Cover/Landfill Maintenance	Week of 9/13/21	N/A
20-Sep	945.04	N	Daily Cover/Landfill Maintenance	Week of 9/20/21	N/A
21-Sep	858.81	N	Daily Cover/Landfill Maintenance	Week of 9/20/21	N/A

22-Sep	932.54	N	Daily Cover/Landfill Maintenance	Week of 9/20/21	N/A
23-Sep	1012.54	N	Daily Cover/Landfill Maintenance	Week of 9/20/21	N/A
24-Sep	670.05	N	Daily Cover/Landfill Maintenance	Week of 9/20/21	N/A
25-Sep	860.67	N	Daily Cover/Landfill Maintenance	Week of 9/20/21	N/A
27-Sep	992.66	N	Daily Cover/Landfill Maintenance	Week of 9/27/21	N/A
28-Sep	1039.7	N	Daily Cover/Landfill Maintenance	Week of 9/27/21	N/A
29-Sep	1025.64	N	Daily Cover/Landfill Maintenance	Week of 9/27/21	N/A
30-Sep	630.41	N	Daily Cover/Landfill Maintenance	Week of 9/27/21	N/A
TOTAL	19225.17				

⁴From September 1 through September 30 material was received from: Quest, CWS, Santa Monica

Table 5. October 2021 Daily Import⁵

Date	Quantity (Tons)	Stockpiled (Y/N)	Use of Soil	Dates of Usage	Stockpile Location
1-Oct	400.62	N	Daily Cover/Landfill Maintenance	Week of 9/27/21	N/A

2-Oct	54	N	Daily Cover/Landfill Maintenance	Week of 9/27/21	N/A
4-Oct	594.69	N	Daily Cover/Landfill Maintenance	Week of 10/4/21	N/A
	477.82	N	Daily Cover/Landfill Maintenance	Week of 10/4/21	N/A
5-Oct	1306.14	N	Daily Cover/Landfill Maintenance	Week of 10/4/21	N/A
	54.86	N	Daily Cover/Landfill Maintenance	Week of 10/4/21	N/A
6-Oct	1291.37	N	Daily Cover/Landfill Maintenance	Week of 10/4/21	N/A
	897.1775	N	Daily Cover/Landfill Maintenance	Week of 10/4/21	N/A
7-Oct	1348.24	N	Daily Cover/Landfill Maintenance	Week of 10/4/21	N/A
	690	N	Daily Cover/Landfill Maintenance	Week of 10/4/21	N/A
8-Oct	1327.01	N	Daily Cover/Landfill Maintenance	Week of 10/4/21	N/A
9-Oct	409.03	N	Daily Cover/Landfill Maintenance	Week of 10/4/21	N/A
11-Oct	471.39	N	Daily Cover/Landfill Maintenance	Week of 10/11/21	N/A

12-Oct	1353.88	N	Daily Cover/Landfill Maintenance	Week of 10/11/21	N/A
	178.57	N	Daily Cover/Landfill Maintenance	Week of 10/11/21	N/A
13-Oct	1320.03	N	Daily Cover/Landfill Maintenance	Week of 10/11/21	N/A
	73.97	N	Daily Cover/Landfill Maintenance	Week of 10/11/21	N/A
14-Oct	1296.24	N	Daily Cover/Landfill Maintenance	Week of 10/11/21	N/A
	196.7	N	Daily Cover/Landfill Maintenance	Week of 10/11/21	N/A
15-Oct	1313.16	N	Daily Cover/Landfill Maintenance	Week of 10/11/21	N/A
	235.13	N	Daily Cover/Landfill Maintenance	Week of 10/11/21	N/A
16-Oct	40.86	N	Daily Cover/Landfill Maintenance	Week of 10/11/21	N/A
18-Oct	649.56	N	Daily Cover/Landfill Maintenance	Week of 10/18/21	N/A
	98.16	N	Daily Cover/Landfill Maintenance	Week of 10/18/21	N/A
19-Oct	1223.67	N	Daily Cover/Landfill Maintenance	Week of 10/18/21	N/A

	116.68	N	Daily Cover/Landfill Maintenance	Week of 10/18/21	N/A
20-Oct	1098.99	N	Daily Cover/Landfill Maintenance	Week of 10/18/21	N/A
	176.27	N	Daily Cover/Landfill Maintenance	Week of 10/18/21	N/A
21-Oct	1113.23	N	Daily Cover/Landfill Maintenance	Week of 10/18/21	N/A
	220.1	N	Daily Cover/Landfill Maintenance	Week of 10/18/21	N/A
22-Oct	781.78	N	Daily Cover/Landfill Maintenance	Week of 10/18/21	N/A
	172.35	N	Daily Cover/Landfill Maintenance	Week of 10/18/21	N/A
26-Oct	160.95	N	Daily Cover/Landfill Maintenance	Week of 10/25/21	N/A
27-Oct	978.28	N	Daily Cover/Landfill Maintenance	Week of 10/25/21	N/A
	67.36	N	Daily Cover/Landfill Maintenance	Week of 10/25/21	N/A
28-Oct	908.62	N	Daily Cover/Landfill Maintenance	Week of 10/25/21	N/A
	42.68	N	Daily Cover/Landfill Maintenance	Week of 10/25/21	N/A

29-Oct	818.75	N	Daily Cover/Landfill Maintenance	Week of 10/25/21	N/A
	67.58	N	Daily Cover/Landfill Maintenance	Week of 10/25/21	N/A
TOTAL	24025.8975				

⁵From October 1 through October 31 material was received from Pacoima Spreading Grounds, CWS, Pena, Santa Monica

Table 6. November 2021 Daily Import⁶

Date	Quantity (Tons)	Stockpiled (Y/N)	Use of Soil	Dates of Usage	Stockpile Location
1-Nov	648.44	N	Daily Cover/Landfill Maintenance	Week of 11/1/21	N/A
	282.81	N	Daily Cover/Landfill Maintenance	Week of 11/1/21	N/A
2-Nov	993.68	N	Daily Cover/Landfill Maintenance	Week of 11/1/21	N/A
	828.49	N	Daily Cover/Landfill Maintenance	Week of 11/1/21	N/A
3-Nov	748.7	N	Daily Cover/Landfill Maintenance	Week of 11/1/21	N/A
	535.78	N	Daily Cover/Landfill Maintenance	Week of 11/1/21	N/A
4-Nov	914.12	N	Daily Cover/Landfill Maintenance	Week of 11/1/21	N/A
	953.67	N	Daily Cover/Landfill Maintenance	Week of 11/1/21	N/A

5-Nov	770.65	N	Daily Cover/Landfill Maintenance	Week of 11/1/21	N/A
	927.55	N	Daily Cover/Landfill Maintenance	Week of 11/1/21	N/A
8-Nov	655.48	N	Daily Cover/Landfill Maintenance	Week of 11/8/21	N/A
	1666.935	N	Daily Cover/Landfill Maintenance	Week of 11/8/21	N/A
9-Nov	1320.39	N	Daily Cover/Landfill Maintenance	Week of 11/8/21	N/A
	720.4	N	Daily Cover/Landfill Maintenance	Week of 11/8/21	N/A
10-Nov	982.98	N	Daily Cover/Landfill Maintenance	Week of 11/8/21	N/A
	1447.68	N	Daily Cover/Landfill Maintenance	Week of 11/8/21	N/A
11-Nov	2361.13	N	Daily Cover/Landfill Maintenance	Week of 11/8/21	N/A
12-Nov	911.35	N	Daily Cover/Landfill Maintenance	Week of 11/8/21	N/A
	1565.07	N	Daily Cover/Landfill Maintenance	Week of 11/8/21	N/A
13-Nov	123.95	N	Daily Cover/Landfill Maintenance	Week of 11/8/21	N/A

15-Nov	268.17	N	Daily Cover/Landfill Maintenance	Week of 11/15/21	N/A
	2200.77	N	Daily Cover/Landfill Maintenance	Week of 11/15/21	N/A
16-Nov	706.98	N	Daily Cover/Landfill Maintenance	Week of 11/15/21	N/A
	1718.85	N	Daily Cover/Landfill Maintenance	Week of 11/15/21	N/A
17-Nov	547.8	N	Daily Cover/Landfill Maintenance	Week of 11/15/21	N/A
	1814.5	N	Daily Cover/Landfill Maintenance	Week of 11/15/21	N/A
18-Nov	717.81	N	Daily Cover/Landfill Maintenance	Week of 11/15/21	N/A
	1674.13	N	Daily Cover/Landfill Maintenance	Week of 11/15/21	N/A
19-Nov	1075.37	N	Daily Cover/Landfill Maintenance	Week of 11/15/21	N/A
20-Nov	196	N	Daily Cover/Landfill Maintenance	Week of 11/15/21	N/A
22-Nov	786.7	N	Daily Cover/Landfill Maintenance	Week of 11/22/21	N/A
	688.55	N	Daily Cover/Landfill Maintenance	Week of 11/22/21	N/A

23-Nov	194.24	N	Daily Cover/Landfill Maintenance	Week of 11/22/21	N/A
	533.36	N	Daily Cover/Landfill Maintenance	Week of 11/22/21	N/A
24-Nov	1075.26	N	Daily Cover/Landfill Maintenance	Week of 11/22/21	N/A
26-Nov	112.32	N	Daily Cover/Landfill Maintenance	Week of 11/22/21	N/A
29-Nov	886.58	N	Daily Cover/Landfill Maintenance	Week of 11/29/21	N/A
	384.67	N	Daily Cover/Landfill Maintenance	Week of 11/29/21	N/A
30-Nov	828.85	N	Daily Cover/Landfill Maintenance	Week of 11/29/21	N/A
	133.67	N	Daily Cover/Landfill Maintenance	Week of 11/29/21	N/A
TOTAL	35903.835				

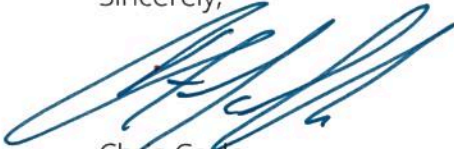
⁶From November 1 through November 30th material was received from: Pacoima Spreading Grounds, Pena, CWS, Santa Monica

As shown in Tables 1 through 6 above, the daily tonnage of import did not exceed 2,500 on any given day. All of the material imported was utilized for daily cover and other daily maintenance activities, such as road and gas infrastructure maintenance. To date, no material from the import has been stockpiled on-site for future use. When material is delivered, it is staged in a designated area of cell CC4-Part 3 for easier accessibility to the operations team. The staging area is identified in the map in Attachment A of this summary. However, during the reporting period, no material has remained in this staging area longer than one week. In the future, should any material be stockpiled on-site for future use, the subsequent Semi-Annual Summary will include a map indicating the location and quantity of the stockpile.

The next Semi-Annual Summary will be provided to DPW by June 15, 2022 and will cover import activities from December 2021 through May 2022.

Should you have any questions please don't hesitate to reach me at 818.362.2141.

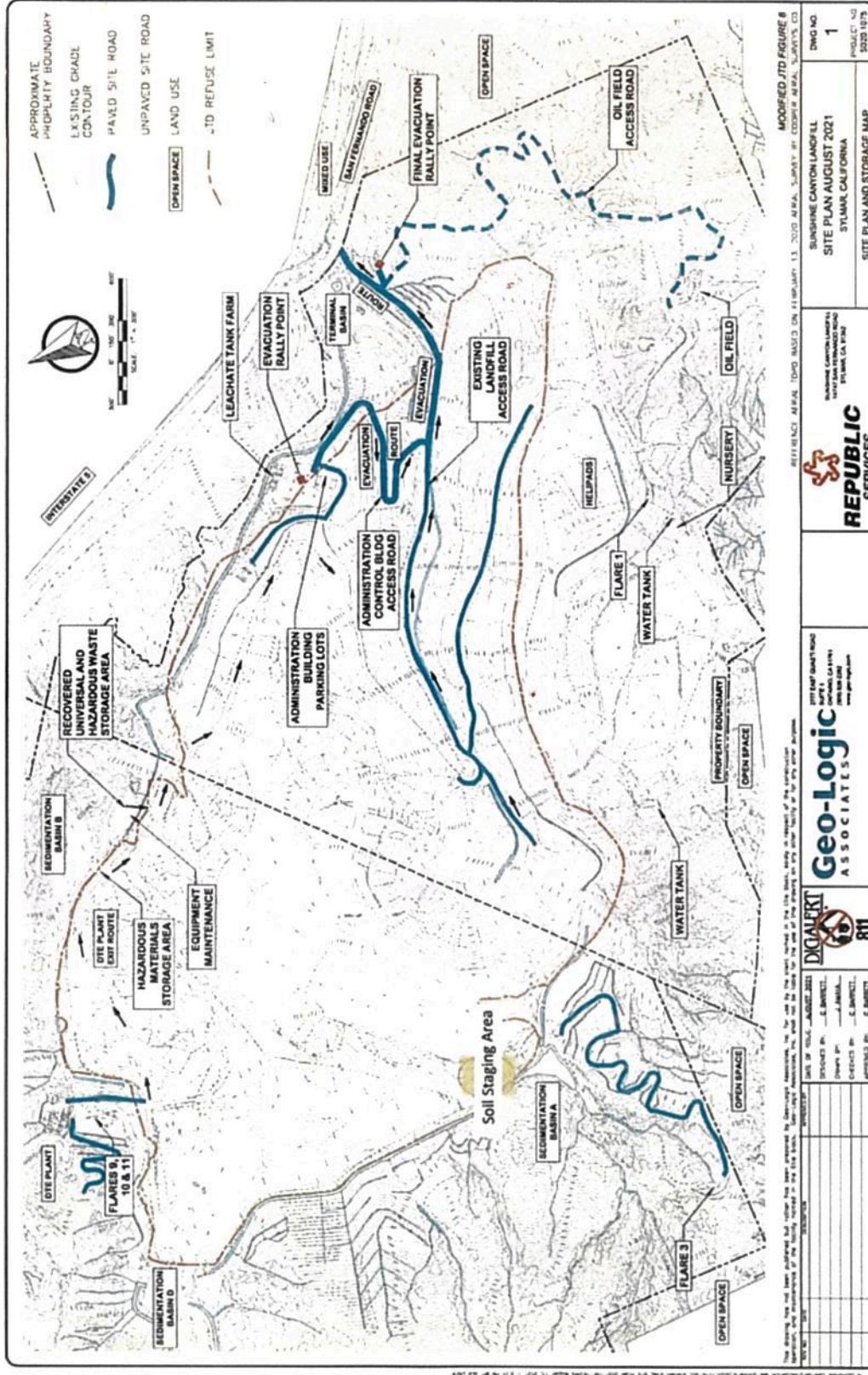
Sincerely,



Chris Coyle
General Manager
Sunshine Canyon Landfill

Copies To:
Michael Harmon
Dave Nguyen
Gabriel Esparza
Vu Truong
Omid Mazdiasni

Attachment A



Geo-Logic ASSOCIATES

2077 EAST GARDEN ROAD
SUITE 1
SANTA ANA, CA 92705
(714) 952-1111
www.geo-logic.com

REPUBLIC SERVICES

SUNSHINE CANYON LANDFILL
SITE PLAN AUGUST 2021
SYLMAR, CALIFORNIA

MODIFIED JTD FIGURE 8

REFERENCE MAP: TDPD BASIN ON 11 JANUARY 13, 2020 ARAI, SURVEY BY: COOPER ARAI, SURVEY CO

DWG NO. **1**

PROJECT NO. **50251975**

SITE PLAN AND STORAGE MAP

DATE	BY	REVISION
11/11/2021	J. BARNETT	REVISED
11/11/2021	J. BARNETT	REVISED
11/11/2021	J. BARNETT	REVISED
11/11/2021	J. BARNETT	REVISED

Enclosure 3

January 31, 2022

Martins Aiyetiwa
Los Angeles County Public Works
900 South Fremont Avenue
Alhambra, CA 91803-1331

Subject: Sunshine Canyon Landfill – First Semi-Annual Soil Importation Summary

Dear Mr. Aiyetiwa:

Sunshine Canyon Landfill (SCL) obtained approval from County of Los Angeles Department of Public Works (DPW) to import up to 2,500 tons per day of clean soil material for beneficial use per your letter dated June 15, 2021. Within that approval, a condition was included requiring SCL to provide monthly summaries related to the incoming material on a semi-annual basis, with the first report due six months after date of approval (Condition #s 7 and 8).

The following is the first Semi-Annual Summary, which covers all requested information regarding daily soil import activities from June 15, 2021 through November 30, 2021.

Table 1. June 2021 Daily Import¹

Date	Quantity (Tons)	Stockpiled (Y/N)	Use of Soil	Dates of Usage	Stockpile Location
21-Jun	1459.6	N	Daily Cover/Landfill Maintenance	Week of 6/21/21	N/A
22-Jun	2047.81	N	Daily Cover/Landfill Maintenance	Week of 6/21/21	N/A
23-Jun	2009.79	N	Daily Cover/Landfill Maintenance	Week of 6/21/21	N/A
24-Jun	1935.33	N	Daily Cover/Landfill Maintenance	Week of 6/21/21	N/A
25-Jun	1961.93	N	Daily Cover/Landfill Maintenance	Week of 6/21/21	N/A
28-Jun	1396.26	N	Daily Cover/Landfill Maintenance	Week of 6/28/21	N/A

29-Jun	1646.86	N	Daily Cover/Landfill Maintenance	Week of 6/28/21	N/A
30-Jun	1659.49	N	Daily Cover/Landfill Maintenance	Week of 6/28/21	N/A
TOTAL	14117.07				

¹June 21 through June 30 material was received from: LA Reservoir

Table 2. July 2021 Daily Import²

Date	Quantity (Tons)	Stockpiled (Y/N)	Use of Soil	Dates of Usage	Stockpile Location
1-Jul	2067.51	N	Daily Cover/Landfill Maintenance	Week of 6/28/21	N/A
2-Jul	2029.76	N	Daily Cover/Landfill Maintenance	Week of 6/28/21	N/A
6-Jul	2048.87	N	Daily Cover/Landfill Maintenance	Week of 7/5/21	N/A
7-Jul	1965.95	N	Daily Cover/Landfill Maintenance	Week of 7/5/21	N/A
8-Jul	2227.25	N	Daily Cover/Landfill Maintenance	Week of 7/5/21	N/A
9-Jul	2059.1	N	Daily Cover/Landfill Maintenance	Week of 7/5/21	N/A
12-Jul	1969.02	N	Daily Cover/Landfill Maintenance	Week of 7/12/21	N/A
13-Jul	1995.4	N	Daily Cover/Landfill Maintenance	Week of 7/12/21	N/A

14-Jul	1745.71	N	Daily Cover/Landfill Maintenance	Week of 7/12/21	N/A
15-Jul	1940.66	N	Daily Cover/Landfill Maintenance	Week of 7/12/21	N/A
16-Jul	1936.05	N	Daily Cover/Landfill Maintenance	Week of 7/12/21	N/A
19-Jul	1930.95	N	Daily Cover/Landfill Maintenance	Week of 7/19/21	N/A
20-Jul	1867.02	N	Daily Cover/Landfill Maintenance	Week of 7/19/21	N/A
21-Jul	1884.65	N	Daily Cover/Landfill Maintenance	Week of 7/19/21	N/A
22-Jul	1911.76	N	Daily Cover/Landfill Maintenance	Week of 7/19/21	N/A
23-Jul	2035.83	N	Daily Cover/Landfill Maintenance	Week of 7/26/21	N/A
26-Jul	2216.06	N	Daily Cover/Landfill Maintenance	Week of 7/26/21	N/A
27-Jul	1824.98	N	Daily Cover/Landfill Maintenance	Week of 7/26/21	N/A
28-Jul	1829.75	N	Daily Cover/Landfill Maintenance	Week of 7/26/21	N/A
29-Jul	1977.93	N	Daily Cover/Landfill Maintenance	Week of 7/26/21	N/A

30-Jul	1907.42	N	Daily Cover/Landfill Maintenance	Week of 7/26/21	N/A
TOTAL	41371.63				

²From July 1 through July 31 material was received from: LA Reservoir

Table 3. August 2021 Daily Import³

Date	Quantity (Tons)	Stockpiled (Y/N)	Use of Soil	Dates of Usage	Stockpile Location
2-Aug	1857.18	N	Daily Cover/Landfill Maintenance	Week of 8/2/21	N/A
3-Aug	2039.63	N	Daily Cover/Landfill Maintenance	Week of 8/2/21	N/A
4-Aug	1995.02	N	Daily Cover/Landfill Maintenance	Week of 8/2/21	N/A
5-Aug	1952.7	N	Daily Cover/Landfill Maintenance	Week of 8/2/21	N/A
6-Aug	1858.22	N	Daily Cover/Landfill Maintenance	Week of 8/2/21	N/A
9-Aug	2015.43	N	Daily Cover/Landfill Maintenance	Week of 8/9/21	N/A
10- Aug	1949.33	N	Daily Cover/Landfill Maintenance	Week of 8/9/21	N/A
11- Aug	1203	N	Daily Cover/Landfill Maintenance	Week of 8/9/21	N/A
24- Aug	167.47	N	Daily Cover/Landfill Maintenance	Week of 8/23/21	N/A

25-Aug	145.27	N	Daily Cover/Landfill Maintenance	Week of 8/23/21	N/A
26-Aug	1017.995	N	Daily Cover/Landfill Maintenance	Week of 8/23/21	N/A
27-Aug	961.02	N	Daily Cover/Landfill Maintenance	Week of 8/23/21	N/A
30-Aug	146.49	N	Daily Cover/Landfill Maintenance	Week of 8/30/21	N/A
31-Aug	251.65	N	Daily Cover/Landfill Maintenance	Week of 8/30/21	N/A
TOTAL	17560.405				

³From August 1 through August 31 material was received from LA Reservoir, Quest, and CWS

Table 4. September 2021 Daily Import⁴

Date	Quantity (Tons)	Stockpiled (Y/N)	Use of Soil	Dates of Usage	Stockpile Location
1-Sep	868.33	N	Daily Cover/Landfill Maintenance	Week of 8/30/21	N/A
2-Sep	622.2	N	Daily Cover/Landfill Maintenance	Week of 8/30/21	N/A
3-Sep	451.12	N	Daily Cover/Landfill Maintenance	Week of 8/30/21	N/A
4-Sep	26.52	N	Daily Cover/Landfill Maintenance	Week of 8/30/21	N/A

7-Sep	1360.22	N	Daily Cover/Landfill Maintenance	Week of 9/6/21	N/A
8-Sep	534.3	N	Daily Cover/Landfill Maintenance	Week of 9/6/21	N/A
9-Sep	904.99	N	Daily Cover/Landfill Maintenance	Week of 9/6/21	N/A
10-Sep	938.05	N	Daily Cover/Landfill Maintenance	Week of 9/6/21	N/A
11-Sep	44.2	N	Daily Cover/Landfill Maintenance	Week of 9/6/21	N/A
13-Sep	1122.3	N	Daily Cover/Landfill Maintenance	Week of 9/13/21	N/A
14-Sep	865.69	N	Daily Cover/Landfill Maintenance	Week of 9/13/21	N/A
15-Sep	547.86	N	Daily Cover/Landfill Maintenance	Week of 9/13/21	N/A
16-Sep	818.65	N	Daily Cover/Landfill Maintenance	Week of 9/13/21	N/A
17-Sep	1152.68	N	Daily Cover/Landfill Maintenance	Week of 9/13/21	N/A
20-Sep	945.04	N	Daily Cover/Landfill Maintenance	Week of 9/20/21	N/A
21-Sep	858.81	N	Daily Cover/Landfill Maintenance	Week of 9/20/21	N/A

22-Sep	932.54	N	Daily Cover/Landfill Maintenance	Week of 9/20/21	N/A
23-Sep	1012.54	N	Daily Cover/Landfill Maintenance	Week of 9/20/21	N/A
24-Sep	670.05	N	Daily Cover/Landfill Maintenance	Week of 9/20/21	N/A
25-Sep	860.67	N	Daily Cover/Landfill Maintenance	Week of 9/20/21	N/A
27-Sep	992.66	N	Daily Cover/Landfill Maintenance	Week of 9/27/21	N/A
28-Sep	1039.7	N	Daily Cover/Landfill Maintenance	Week of 9/27/21	N/A
29-Sep	1025.64	N	Daily Cover/Landfill Maintenance	Week of 9/27/21	N/A
30-Sep	630.41	N	Daily Cover/Landfill Maintenance	Week of 9/27/21	N/A
TOTAL	19225.17				

⁴From September 1 through September 30 material was received from: Quest, CWS, Santa Monica

Table 5. October 2021 Daily Import⁵

Date	Quantity (Tons)	Stockpiled (Y/N)	Use of Soil	Dates of Usage	Stockpile Location
1-Oct	400.62	N	Daily Cover/Landfill Maintenance	Week of 9/27/21	N/A

2-Oct	54	N	Daily Cover/Landfill Maintenance	Week of 9/27/21	N/A
4-Oct	594.69	N	Daily Cover/Landfill Maintenance	Week of 10/4/21	N/A
	477.82	N	Daily Cover/Landfill Maintenance	Week of 10/4/21	N/A
5-Oct	1306.14	N	Daily Cover/Landfill Maintenance	Week of 10/4/21	N/A
	54.86	N	Daily Cover/Landfill Maintenance	Week of 10/4/21	N/A
6-Oct	1291.37	N	Daily Cover/Landfill Maintenance	Week of 10/4/21	N/A
	897.1775	N	Daily Cover/Landfill Maintenance	Week of 10/4/21	N/A
7-Oct	1348.24	N	Daily Cover/Landfill Maintenance	Week of 10/4/21	N/A
	690	N	Daily Cover/Landfill Maintenance	Week of 10/4/21	N/A
8-Oct	1327.01	N	Daily Cover/Landfill Maintenance	Week of 10/4/21	N/A
9-Oct	409.03	N	Daily Cover/Landfill Maintenance	Week of 10/4/21	N/A
11-Oct	471.39	N	Daily Cover/Landfill Maintenance	Week of 10/11/21	N/A

12-Oct	1353.88	N	Daily Cover/Landfill Maintenance	Week of 10/11/21	N/A
	178.57	N	Daily Cover/Landfill Maintenance	Week of 10/11/21	N/A
13-Oct	1320.03	N	Daily Cover/Landfill Maintenance	Week of 10/11/21	N/A
	73.97	N	Daily Cover/Landfill Maintenance	Week of 10/11/21	N/A
14-Oct	1296.24	N	Daily Cover/Landfill Maintenance	Week of 10/11/21	N/A
	196.7	N	Daily Cover/Landfill Maintenance	Week of 10/11/21	N/A
15-Oct	1313.16	N	Daily Cover/Landfill Maintenance	Week of 10/11/21	N/A
	235.13	N	Daily Cover/Landfill Maintenance	Week of 10/11/21	N/A
16-Oct	40.86	N	Daily Cover/Landfill Maintenance	Week of 10/11/21	N/A
18-Oct	649.56	N	Daily Cover/Landfill Maintenance	Week of 10/18/21	N/A
	98.16	N	Daily Cover/Landfill Maintenance	Week of 10/18/21	N/A
19-Oct	1223.67	N	Daily Cover/Landfill Maintenance	Week of 10/18/21	N/A

	116.68	N	Daily Cover/Landfill Maintenance	Week of 10/18/21	N/A
20-Oct	1098.99	N	Daily Cover/Landfill Maintenance	Week of 10/18/21	N/A
	176.27	N	Daily Cover/Landfill Maintenance	Week of 10/18/21	N/A
21-Oct	1113.23	N	Daily Cover/Landfill Maintenance	Week of 10/18/21	N/A
	220.1	N	Daily Cover/Landfill Maintenance	Week of 10/18/21	N/A
22-Oct	781.78	N	Daily Cover/Landfill Maintenance	Week of 10/18/21	N/A
	172.35	N	Daily Cover/Landfill Maintenance	Week of 10/18/21	N/A
26-Oct	160.95	N	Daily Cover/Landfill Maintenance	Week of 10/25/21	N/A
27-Oct	978.28	N	Daily Cover/Landfill Maintenance	Week of 10/25/21	N/A
	67.36	N	Daily Cover/Landfill Maintenance	Week of 10/25/21	N/A
28-Oct	908.62	N	Daily Cover/Landfill Maintenance	Week of 10/25/21	N/A
	42.68	N	Daily Cover/Landfill Maintenance	Week of 10/25/21	N/A

29-Oct	818.75	N	Daily Cover/Landfill Maintenance	Week of 10/25/21	N/A
	67.58	N	Daily Cover/Landfill Maintenance	Week of 10/25/21	N/A
TOTAL	24025.8975				

⁵From October 1 through October 31 material was received from Pacoima Spreading Grounds, CWS, Pena, Santa Monica

Table 6. November 2021 Daily Import⁶

Date	Quantity (Tons)	Stockpile d (Y/N)	Use of Soil	Dates of Usage	Stockpile Location
1-Nov	648.44	N	Daily Cover/Landfill Maintenance	Week of 11/1/21	N/A
	282.81	N	Daily Cover/Landfill Maintenance	Week of 11/1/21	N/A
2-Nov	993.68	N	Daily Cover/Landfill Maintenance	Week of 11/1/21	N/A
	828.49	N	Daily Cover/Landfill Maintenance	Week of 11/1/21	N/A
3-Nov	748.7	N	Daily Cover/Landfill Maintenance	Week of 11/1/21	N/A
	535.78	N	Daily Cover/Landfill Maintenance	Week of 11/1/21	N/A
4-Nov	914.12	N	Daily Cover/Landfill Maintenance	Week of 11/1/21	N/A
	953.67	N	Daily Cover/Landfill Maintenance	Week of 11/1/21	N/A

5-Nov	770.65	N	Daily Cover/Landfill Maintenance	Week of 11/1/21	N/A
	927.55	N	Daily Cover/Landfill Maintenance	Week of 11/1/21	N/A
8-Nov	655.48	N	Daily Cover/Landfill Maintenance	Week of 11/8/21	N/A
	1666.935	N	Daily Cover/Landfill Maintenance	Week of 11/8/21	N/A
9-Nov	1320.39	N	Daily Cover/Landfill Maintenance	Week of 11/8/21	N/A
	720.4	N	Daily Cover/Landfill Maintenance	Week of 11/8/21	N/A
10-Nov	982.98	N	Daily Cover/Landfill Maintenance	Week of 11/8/21	N/A
	1447.68	N	Daily Cover/Landfill Maintenance	Week of 11/8/21	N/A
11-Nov	2361.13	N	Daily Cover/Landfill Maintenance	Week of 11/8/21	N/A
12-Nov	911.35	N	Daily Cover/Landfill Maintenance	Week of 11/8/21	N/A
	1565.07	N	Daily Cover/Landfill Maintenance	Week of 11/8/21	N/A
13-Nov	123.95	N	Daily Cover/Landfill Maintenance	Week of 11/8/21	N/A

15-Nov	268.17	N	Daily Cover/Landfill Maintenance	Week of 11/15/21	N/A
	2200.77	N	Daily Cover/Landfill Maintenance	Week of 11/15/21	N/A
16-Nov	706.98	N	Daily Cover/Landfill Maintenance	Week of 11/15/21	N/A
	1718.85	N	Daily Cover/Landfill Maintenance	Week of 11/15/21	N/A
17-Nov	547.8	N	Daily Cover/Landfill Maintenance	Week of 11/15/21	N/A
	1814.5	N	Daily Cover/Landfill Maintenance	Week of 11/15/21	N/A
18-Nov	717.81	N	Daily Cover/Landfill Maintenance	Week of 11/15/21	N/A
	1674.13	N	Daily Cover/Landfill Maintenance	Week of 11/15/21	N/A
19-Nov	1075.37	N	Daily Cover/Landfill Maintenance	Week of 11/15/21	N/A
20-Nov	196	N	Daily Cover/Landfill Maintenance	Week of 11/15/21	N/A
22-Nov	786.7	N	Daily Cover/Landfill Maintenance	Week of 11/22/21	N/A
	688.55	N	Daily Cover/Landfill Maintenance	Week of 11/22/21	N/A

23-Nov	194.24	N	Daily Cover/Landfill Maintenance	Week of 11/22/21	N/A
	533.36	N	Daily Cover/Landfill Maintenance	Week of 11/22/21	N/A
24-Nov	1075.26	N	Daily Cover/Landfill Maintenance	Week of 11/22/21	N/A
26-Nov	112.32	N	Daily Cover/Landfill Maintenance	Week of 11/22/21	N/A
29-Nov	886.58	N	Daily Cover/Landfill Maintenance	Week of 11/29/21	N/A
	384.67	N	Daily Cover/Landfill Maintenance	Week of 11/29/21	N/A
30-Nov	828.85	N	Daily Cover/Landfill Maintenance	Week of 11/29/21	N/A
	133.67	N	Daily Cover/Landfill Maintenance	Week of 11/29/21	N/A
TOTAL	35903.835				

⁶From November 1 through November 30th material was received from: Pacoima Spreading Grounds, Pena, CWS, Santa Monica

As shown in Tables 1 through 6 above, the daily tonnage of import did not exceed 2,500 on any given day. All of the material imported was utilized for daily cover and other daily maintenance activities, such as road and gas infrastructure maintenance. To date, no material from the import has been stockpiled on-site for future use. When material is delivered, it is staged in a designated area of cell CC4-Part 3 for easier accessibility to the operations team. The staging area is identified in the map in Attachment A of this summary. However, during the reporting period, no material has remained in this staging area longer than one week. In the future, should any material be stockpiled on-site for future use, the subsequent Semi-Annual Summary will include a map indicating the location and quantity of the stockpile.

As material is imported, the operations team assesses the current needs of the site and will make real-time decisions to stage for daily cover, or use immediately for road and other maintenance throughout the site. On days where the incoming material exceeds the need for daily cover for the remainder of the week (including Saturday full cover), and road and other maintenance activities, that material will then be stockpiled. Given the site's current shortage and daily needs, we anticipate that material will not be stockpiled in the immediate future. However, an update will be provided as to the status of the stockpile, if any, in the next Semi-Annual Soil Import Summary Report.

Although SCL is currently requesting an increase in import from 2,500 tpd to 3,500 tpd of clean soil, under no circumstances will the site exceed the current inbound volume cap of 12,100 tpd. SCL is able to monitor the inbound tonnage in real time, and can make instantaneous changes to the inbound volumes to ensure that our cap is not exceeded. If necessary, Republic has the ability to divert volume to other disposal sites, or stop receiving material altogether. The site has had approval for 2,500 tpd import of soil since June 2021 and has never exceeded the 12,100 tpd cap due to the volume tracking procedures already in place.

The next Semi-Annual Summary will be provided to DPW by June 15, 2022 and will cover import activities from December 2021 through May 2022.

Should you have any questions please don't hesitate to reach me at 818.362.2141.

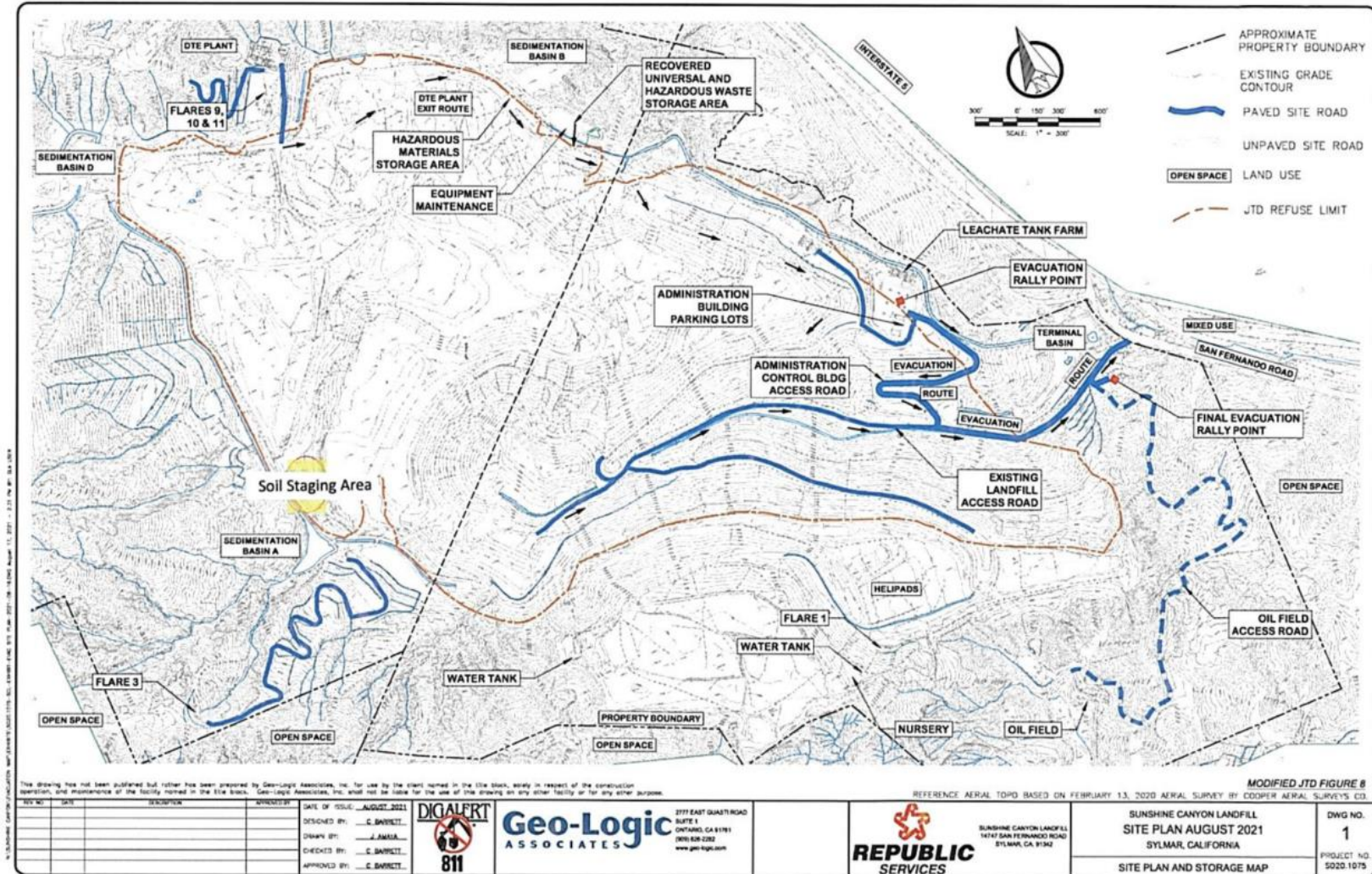
Sincerely,

Chris Coyle
General Manager
Sunshine Canyon Landfill

Copies To:
Michael Harmon
Dave Nguyen
Gabriel Esparza
Vu Truong
Omid Mazdidasni



Attachment A



Enclosure 4



MARK PESTRELLA, Director

COUNTY OF LOS ANGELES

DEPARTMENT OF PUBLIC WORKS

"To Enrich Lives Through Effective and Caring Service"

900 SOUTH FREMONT AVENUE
ALHAMBRA, CALIFORNIA 91803-1331
Telephone: (626) 458-5100
<http://dpw.lacounty.gov>

ADDRESS ALL CORRESPONDENCE TO:
P.O. BOX 1460
ALHAMBRA, CALIFORNIA 91802-1460

June 15, 2021

IN REPLY PLEASE

REFER TO FILE: **EP-5**

Mr. Chris Coyle
General Manager
Republic Services, Inc.
Sunshine Canyon Landfill
14747 San Fernando Road
Sylmar, CA 91342-1021

SUNSHINE CANYON CITY/COUNTY LANDFILL CONDITIONAL USE PERMIT NO. 00-194-(5) AUTHORIZATION TO IMPORT CLEAN SOIL

Dear Mr. Coyle:

Public Works has reviewed Republic Services' revised soil importation request, dated May 21, 2021, (Enclosure 1) and supporting information. Republic submitted the revised request in response to Public Works letter of November 11, 2020, and as further discussed with Public Works on February 23, 2021. The revised request seeks Public Works approval to import clean soil at a maximum rate of 2,500 tons per day to the Sunshine Canyon Landfill, six days per week (Monday – Saturday) for the next five years.

Your request for importation of clean soil for beneficial use at the Landfill is hereby approved pursuant to Conditional Use Permit (CUP) 00-194-(5), Conditions 1.D and 23.E, which requires Republic Services to obtain prior authorization from Public Works prior to importation and acceptance of clean soil material for beneficial use.

This authorization is being granted in order to allow the Landfill to import soil to the site for beneficial uses. Based on your submittal, the volume of on-site soil stockpile will be exhausted in 2021 and importation of soil is necessary for effective landfiling operations at the site. This approval is subject to the following conditions:

1. The quantity of soil to be imported shall not exceed the following:
 - 2,500 tons per day or 15,000 tons per week
 - 3.9 million tons total for the 5-year duration of the project.

- The quantity of soil imported (tonnage) shall be included as part of the total permitted daily and weekly tonnage capacity of materials (Solid Waste, Inert Debris, and Beneficial Use Materials). Pursuant to the CUP, in no event shall the daily tonnage of all materials received by the Landfill exceed 12,100 tons on any given day, six working days per week, nor the total permitted weekly tonnage limit of 72,600 tons per week.
2. The soil importation shall occur during the normal operating hours of the site from Monday to Saturday.
 3. All incoming and departing truck routes associated with this soil importation project shall be limited to the same route from the Interstate 5 Freeway to the Landfill as do loads of refuse, by taking the Roxford Exit and San Fernando Road to the Landfill entrance.
 4. The imported soil shall be placed adjacent to the working area for immediate usage in a designated location, or if soil is not needed at the working area, it shall be taken to a designated stockpile location as defined in the Landfill's Joint Technical Document. Additionally, all stockpile areas shall be vegetated if left unused longer than 180 days and will require soil stockpile grading and drainage plans to be provided within 30 days from the date of this letter for further review and approval (pursuant to CUP Condition 37).
 5. The operator shall comply with the currently approved Fugitive Dust Control Program to minimize dust resulting from the importation project.
 6. The operator shall follow all applicable local, State, and Federal standards and requirements for the importation of clean soil from off-site sources, including but not limited to, the approved Waste Load Checking Program and the Waste Discharge Requirements issued by the California Regional Water Quality Control Board to ensure the imported soil's quality is acceptable under this program and permit.
 7. Republic shall keep records of all soil materials received, including but not limited to, source of imported soil, quantities accepted/imported and use of onsite soil and purpose, delivery schedules, usage schedules, stockpiled, beneficially used, and disposed of.
 8. The operator shall submit monthly summaries of these records on a semi-annual basis, including a stockpile location map, to Public Works Environmental Programs

Mr. Chris Coyle
June 15, 2021
Page 3

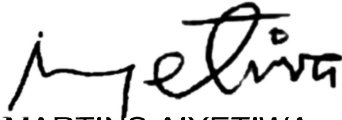
Division for the duration of this project. The first semi-annual report shall be submitted six months from the date of this letter.

9. The Director of Public Works, at his/her sole discretion, may rescind or terminate this approval if Public Works determines that any of the conditions of approval has been violated and/or that such termination is necessary to protect public health, safety, welfare, and/or the environment.

If you have any questions, please contact me or your staff may contact Mr. Gabriel Esparza at (626) 458-4946 or gesparza@dpw.lacounty.gov, Monday through Thursday, 7:00 a.m. to 5:30 p.m.

Very truly yours,

MARK PESTRELLA, PE
Director of Public Works



MARTINS AIYETIWA
Senior Civil Engineer
Environmental Programs Division

MA:rw

P:\SEC\RWEP5\SCL IMPORT SOIL APPROVAL LETTER.DOCX

Enc.

cc: Department of Regional Planning (Edgar De La Torre, Alex Garcia, Maria Masis)
City of Los Angeles Department of City Planning (Tiffany Butler, Nicholas Hendricks, Lisa Webber)
Sunshine Canyon Landfill Community Advisory Committee (Wayde Hunter)
Sunshine Canyon Landfill Technical Advisory Committee (Lisa Webber, Jon Sanabria)
Sunshine Canyon Landfill Local Enforcement Agency (Dorcas Hanson-Lugo, Shikari Nakagawa-Ota, David Thompson)
Each Member of the Los Angeles County Solid Waste Management Committee
Integrated Waste Management Task Force

Enclosure 5



MARK PESTRELLA, Director

COUNTY OF LOS ANGELES

DEPARTMENT OF PUBLIC WORKS

"To Enrich Lives Through Effective and Caring Service"

900 SOUTH FREMONT AVENUE
ALHAMBRA, CALIFORNIA 91803-1331
Telephone: (626) 458-5100
<http://dpw.lacounty.gov>

ADDRESS ALL CORRESPONDENCE TO:
P.O. BOX 1460
ALHAMBRA, CALIFORNIA 91802-1460

IN REPLY PLEASE

REFER TO FILE:

EP-5

January 15, 2019

Mr. Chris Coyle, General Manager
Sunshine Canyon Landfill
Republic Services, Inc.
14747 San Fernando Road
Sylmar, CA 91342-1021

Dear Mr. Coyle:

SUNSHINE CANYON CITY/COUNTY LANDFILL ALTERNATIVE DAILY COVER PILOT PROJECT UTILIZING GEOSYNTHETIC PANEL PRODUCT

On September 21, 2018, Republic Services submitted a Report titled "Evaluation of Alternative Daily Cover (ADC) Using Geosynthetic Panel Product" for the third year of the Pilot Project at Sunshine Canyon Landfill. The report presents the findings for the timeframe of October 1, 2017, to August 31, 2018. The pilot project began on October 12, 2015 and has been approved for two 1-year extensions by Los Angeles County Public Works.

Based on the data and information presented in this report, Public Works hereby approves Republic's request for a modification of the additional corrective measures imposed by Public Works in accordance with Condition 45N of the Conditional Use Permit (CUP) and the use of the geosynthetic panel product as ADC on a permanent basis and the cessation of the pilot project. The approval is subject to the following conditions:

General Conditions of Approval

Effective Area – These requirements apply to all areas within the "Limits of Fill" of Exhibit "A-2" as defined in the combined "City/County Project" pursuant to the Los Angeles County CUP.

Standards and Program Requirements

1. ADC Material Specifications – The ADC material to be used shall be limited to a non-reusable, geosynthetic Extended Enviro™ cover with a thickness of 1.75 millimeters, as stated in the Republic Services' original proposal. Any proposed change of this ADC material will require prior approval from Public Works.
2. Equipment Specifications – The Extended Enviro™ cover shall only be deployed using EPI's extended Enviro™ Cover System Deployer Model 800 (Deployer). Any proposed change to this equipment will require prior approval from Public Works.
3. ADC Material Procedures – The ADC material shall only be applied as described in the following restrictions:
 - a. The ADC material shall be applied at the end of each operating day or at more frequent intervals (except Saturday) and shall be left in place at the start of the following day's operations.
 - i. No removal of this ADC material shall be conducted after it is applied at the Working Face.
 - ii. The ADC material will be placed over the entire deck of the operating day's Working Face.
 - iii. The maximum exposure time for the ADC material shall not exceed 5 days.
 - iv. The ADC material shall not be placed on any outside slopes or slopes that will not be part of the operating day's Working Face for longer than 180 days.
 - v. The ADC material shall not be used for intermediate or final cover.
 - b. Six inches of soil shall be used for daily cover at the close of operations on Saturdays and shall remain in place on Monday mornings.
 - i. Republic is allowed "peel back" operations of the soil cover Monday mornings at the Working Face.
 - ii. There shall be no "peel back" in places where the cover soil has been in place for more than 30 days.
 - iii. The "peel back" operations shall be managed in a manner to minimize odors.
 - iv. Only soil may be used as cover on the outside and temporary slopes.

- c. The ADC material will be used on one lift per day.
 - d. The maximum size of the Working Face deck area shall be no larger than 3 acres.
4. Material Placement – The ADC material shall be placed as detailed in Republic Services' Report as follows:
- a. General Placement Procedure
 - i. The Deployer is loaded with a roll of the Extended Enviro™ cover and on-site ballast material.
 - ii. The Deployer is positioned on the outside edge of the cover area to deploy the first panel of the ADC material. The outside edge shall be positioned at a minimum of 5 feet from the outside of the waste material.
 - iii. During the application process, the ADC material is unrolled from the Deployer while ballast material is simultaneously discharged at a controlled rate to securely anchor the ADC material onto the Working Face.
 - iv. On successive adjacent runs to deploy the ADC material. The material is placed so that it overlaps by not less than 10 percent, thus forming a compression-type seal creating a continuous closure and impermeable barrier between the waste and the environment.
 - b. Placement During Windy Conditions – During high-wind conditions, the following operational measures shall be implemented and maintained:
 - i. Wind direction and speed must be established to better determine how the ADC material will be deployed.
 - ii. Upon determination of the wind direction, the ADC material will be placed parallel to the wind direction to minimize the potential uplifting of the material.
 - iii. Additional overlap of the ADC material can be applied, provided that natural tearing and puncturing of the overlapped material as a result of the heavy equipment operating on top of previously covered trash is maintained.
 - c. Placement During Rainy/Stormy Conditions – During rainy/stormy conditions, the following operational measures shall be implemented and maintained:

- i. Intactness of the ballast material shall be maintained to ensure that the ballast material is not washed away by water runoff.
 - ii. No ponding on the surface of the ADC material shall occur. If ponding occurs, appropriate measures shall be taken to resolve this issue.
 - iii. Placement of the ADC material on the working face shall be appropriately deployed to prevent stormwater run-off underneath the ADC material and to inhibit continuous contact of stormwater on the disposed solid waste.
- d. If conditions such as high-winds or heavy rains prevent compliance with these restrictions and prevent the ADC material from functioning properly, the operator shall cover the Working Face with 9 inches of soil, which shall be kept in place at the beginning of the next operating day. Republic can "peel back" the next day following the same ADC material procedures as on Monday mornings.

Public Works reserves the authority and discretion to modify or apply additional measures to the use of the ADC in the future, as deemed necessary, in accordance with Condition 45N of the Landfill's CUP.

Mr. Chris Coyle
January 15, 2019
Page 5

For questions regarding this matter, please contact Mr. David Nguyen of Environmental Programs Division, at (626) 458-5189 or dnguyen@dpw.lacounty.gov.

Very truly yours,

MARK PESTRELLA
Director of Public Works



CARLOS RUIZ
Principal Engineer
Environmental Programs Division

MC:jl

P:\Sec\01.14.19 ADC Approval of Pilot Project 01.docx

cc: Los Angeles County Department of Regional Planning (Maria Masis,
Tim Stapleton)
Los Angeles County Department of Public Health (Shikari Nakagawa-Ota,
Maurice Pantoja, Dorcas Hanson-Lugo)
City of Los Angeles Department of City Planning (Tiffany Butler,
Nicholas Hendricks)
Sunshine Canyon Landfill Local Enforcement Agency (Shikari Nakagawa-Ota,
Maurice Pantoja, Dorcas Hanson-Lugo, David Thompson)
Sunshine Canyon Landfill Technical Advisory Committee (Lisa Webber,
Jon Sanabria)
Sunshine Canyon Landfill Community Advisory Committee (Wayde Hunter)
Members of the Los Angeles County Solid Waste Management
Committee/Integrated
Waste Management Task Force