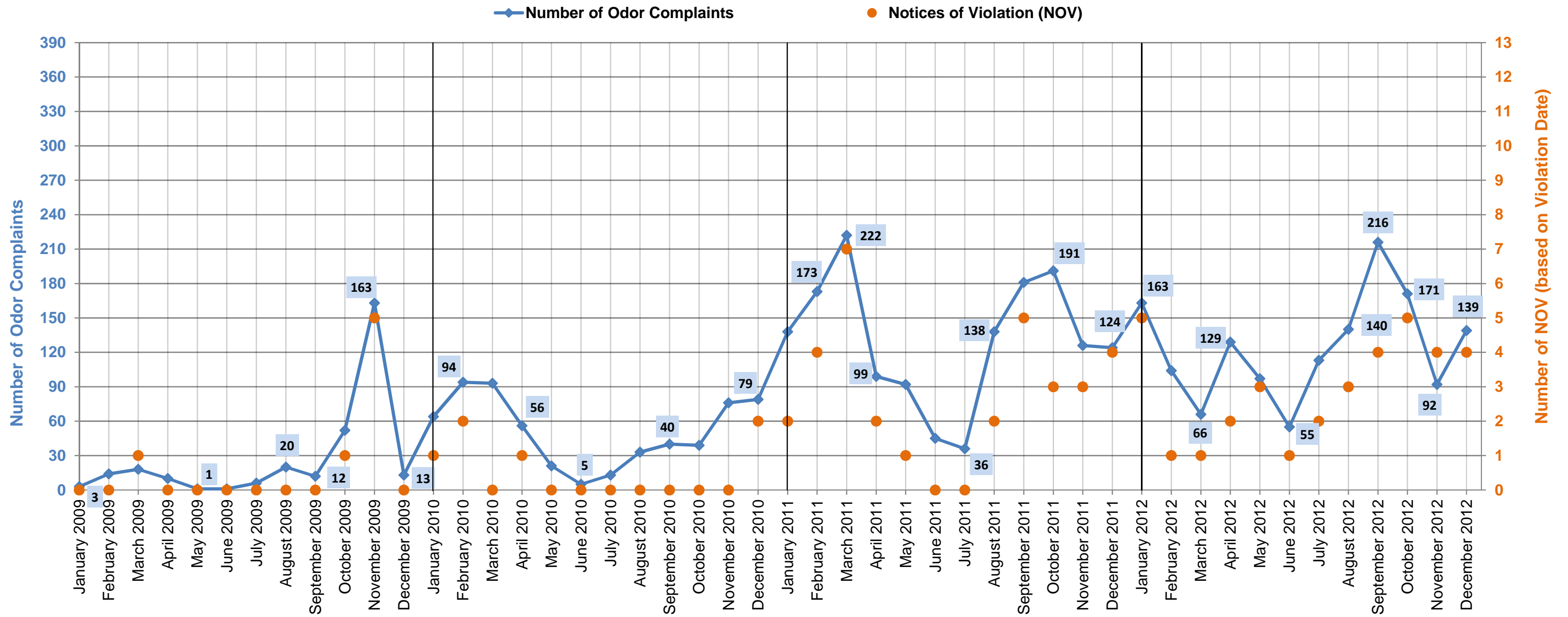


Number of Notices of Violation and Odor Complaints - Sunshine Canyon Landfill



Strong El Niño winds were reported.

Damage to gas collection system.

50 vertical gas wells were installed.

9-inch soil cover requirement.

Geologic movement resulted in large fissures.

54 gas wells were non-functional for several weeks.

Damaged gas line.
Construction of Cell CC2.

Construction of double liner was completed.

Temporary Flare became operational.

Two 200-HP blowers were installed at Flares 1 and 3.

Widespread hydrogen sulfide odor event emanating from the Salton Sea occurred throughout Southern CA.

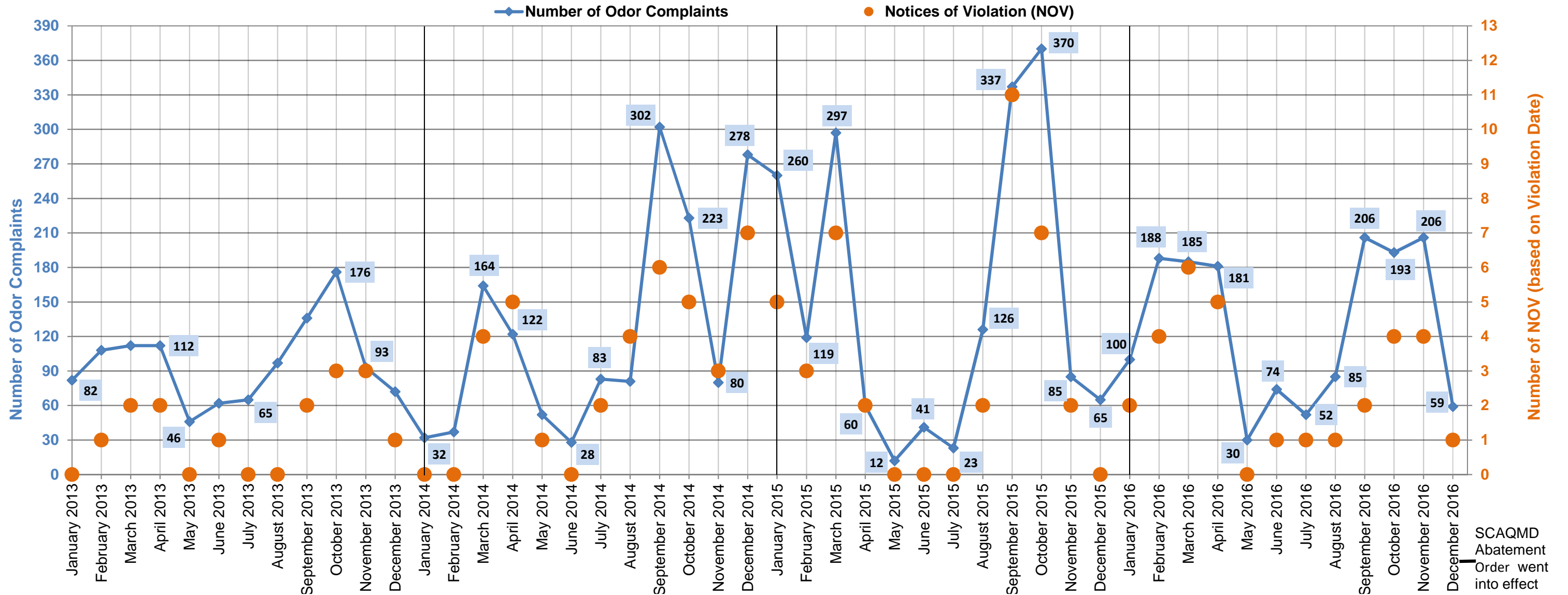
A 200-HP blower was installed at Flare 8.

50 pumps were installed in gas wells.

Flare 9 became operational.

Note: 1.) Number of complaints are based on AQMD's Complaint Summary Monthly Reports.
 2.) Number of Notices of Violation are based on SCAQMD's Facility Information Detail (FIND) website.
 3.) Schools nearby are usually off in early June and resume around 2nd week of August.
 4.) Leachate collected is based on Republic Services' Summary of Water Sources Quarterly Reports to the SCL - LEA.

Number of Notices of Violation and Odor Complaints - Sunshine Canyon Landfill



60 vertical gas wells and 27 pumps were installed.

14 vertical gas wells installed.

Flare 10 became operational.

Gas well was damaged.

14 vertical gas wells were installed.

Ponded water, erosional rills, damaged protective soil layer, and trash exposure from a storm event were observed.

From Dec. 2013 to April 2014, 30 vertical gas wells and 25 pumps were installed.

9,500 linear feet of gas lines and 1,900 linear feet of header lines were installed.

24 vertical gas wells were installed.

July 21 - startup of the Gas-to-Energy facility commenced.

September 1 - Gas-to-Energy facility became fully operational.

29 vertical gas wells were installed, an 18-inch header was installed on the City-side, and well dewatering program was upgraded.

Trash exposure on several occasions were observed due to intense rainfall.

Nov. 3 - trash exposure was observed due to improper covering of trash from the previous Saturday evening.

11 vertical gas wells were installed.

September 16 - approximately 100' x 100' area of settlement within the existing refuse area on the City South portion was observed. Remediation of the area was completed the next day.

Approx. 5' (Feb 9), 20' (Mar. 18 & 23), and two 20' (April 7) flap in length of ADC material was observed due to high winds overnight.

Oct. 12 - Alternative Daily Cover Pilot Project commenced.

18 vertical gas wells were installed.

April 7 - 2" gas leak at GTE plant. Repair was completed next morning.

Installation of 19 new gas well pumps

Nov 6 - 200 gal of liquid discharged from well 802.

Aug. 24, 6 side slope collectors (CC-3B) were put into service

July 8 - 6" condensate leak near CC-3B. Repair completed by 8:30 AM

June 29 - Leaking condensate valve.

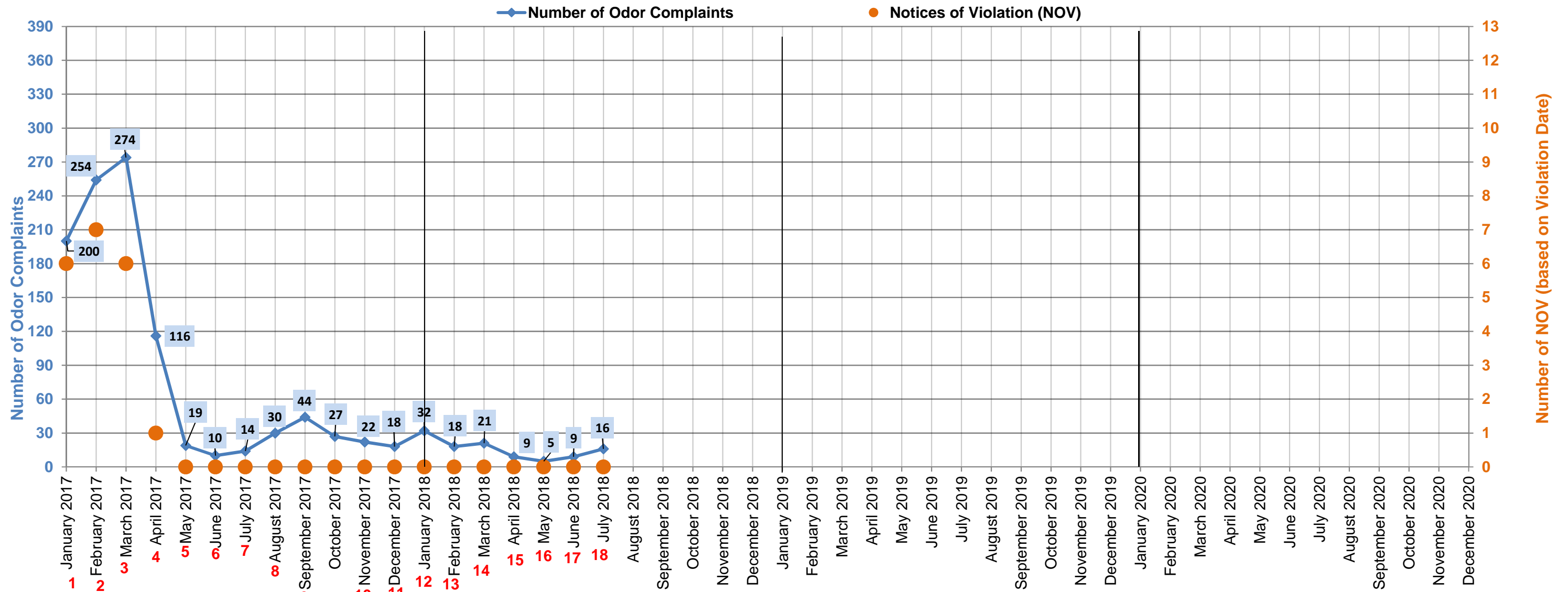
June 21 - An approx. 10' ADC panel laid over Cell-3A had lifted overnight.

June 13 to 17 - Three horizontal collectors installed in CC-3B.

Liquid leak from several locations. Repairs completed same day.

Note: 1.) Number of complaints are based on AQMD's Complaint Summary Monthly Reports.
 2.) Number of Notices of Violation are based on SCAQMD's Facility Information Detail (FIND) website.
 3.) Schools nearby are usually off in early June and resume around 2nd week of August.
 4.) Leachate collected is based on Republic Services' Summary of Water Sources Quarterly Reports to the SCL - LEA.

Number of Notices of Violation and Odor Complaints - Sunshine Canyon Landfill



1. Due to rain, stormwater spilled onto SF Road; Drilling of 15 vertical gas wells;

2. Continue drilling of 15 vertical gas wells; Condensate leaked from well 813 during installation of well pump.

3. Landfill rec'd trash starting from 9:00 AM; a subsurface liquid line near main haul was damage causing 3,000 gals spill on main haul road and some entered into strom drain channel.

4. As of 04/24, 100 new vertical gas wells were installed and pumps are being installed to address liquids.

5. 05/14 Gas header line leaked 200 gals discharged onto main haul road and some entered into storm drain channel and Terminal Basin (TB).

6. 06/08 a slide occurred on the western edge of the CC-4 Part 2 subgrade excavation.
- 06/22 500 gals leak from a blind flange on leachate line.

7. 07/18 Leak from a blind flange on leachate line caused 200 gals release into trench at toe of CC-3B and onto main haul road.

8. 08/16 Repair work for the landslide that occurred on 06/08 was completed.

- 08/24 LEA issued a violation for gas and monitoring control (probe registered an exceedance of over 5%)

-08/24 A force main line was struck by a scraper near CC-4 Part 1, causing a 1,500 gals of liquid discharged.

- 08/25 A pipe ruptured causing 600 gals of dust control water to discharge into the concrete lined channel and entered the TB but contained in TB and was pumped out.

9. 9/25 Leak from a blind flange on a force main line at the toe of cell CC-3A caused a 200 gals discharge.

10. 11/2 Fernco boot on CGW-2133 dislodged off well casing causing 300 gals of liquid to release.

-11/14 Clogged pumps at the toe of cell CC-3B caused 100 gals of liquid discharg.

-11/29 Clogged pumps at the toe of cell CC-3B caused 500 gals of liquid discharge.

11. 12/1, 2, 11, 12,13 liquid seeping on the customer haul road at toe of Cell CC-4 Part 1.

-12/6 100 gals of liquid spilled from broken wellhead CGW2152.

-12/6 800 gals of liquid from the leachate tank farm spilled into containment area.

12. 1/9 ATC 27 and CGW2133 well heads dislodged causing 10 gals and 100 gals of liquid to spill.

- 1/30 GW1035D wellhead dislodged causing 200 gals of leachate spill.

- 1/31 100 gals of condensate spilled from pipe near CC-3A.

13. 2/18 Fernco connection on GW918 popped off spilling 100 gal of liquid.

14. 3/12 Fernco connection on GW3020 popped off and spilled 100 gals of liquid.

-3/23 GW 3010 spilled 500 gals of liquid during routine maintenance on pump.

15. 04/05 AHW10 (Closure Turf Area) dislodged causing 100 gals to spill.

- 04/19 CGW2046 (near Flare Station) dislodged 200 gals.

16. 05/07 20k gals of groundwater spilled into the terminal basin. Spill was contained in TB, no liquids were discharged from site. LEA and Water Board were notified.

17. 06/12 100 gals spilled from sample line at lower treatment facility.

18. 07/18 To mitigate potential spills, Republic in process of converting all Fernco wellhead connections to hard-pipe connections on wells w/pumps in CC-3A.

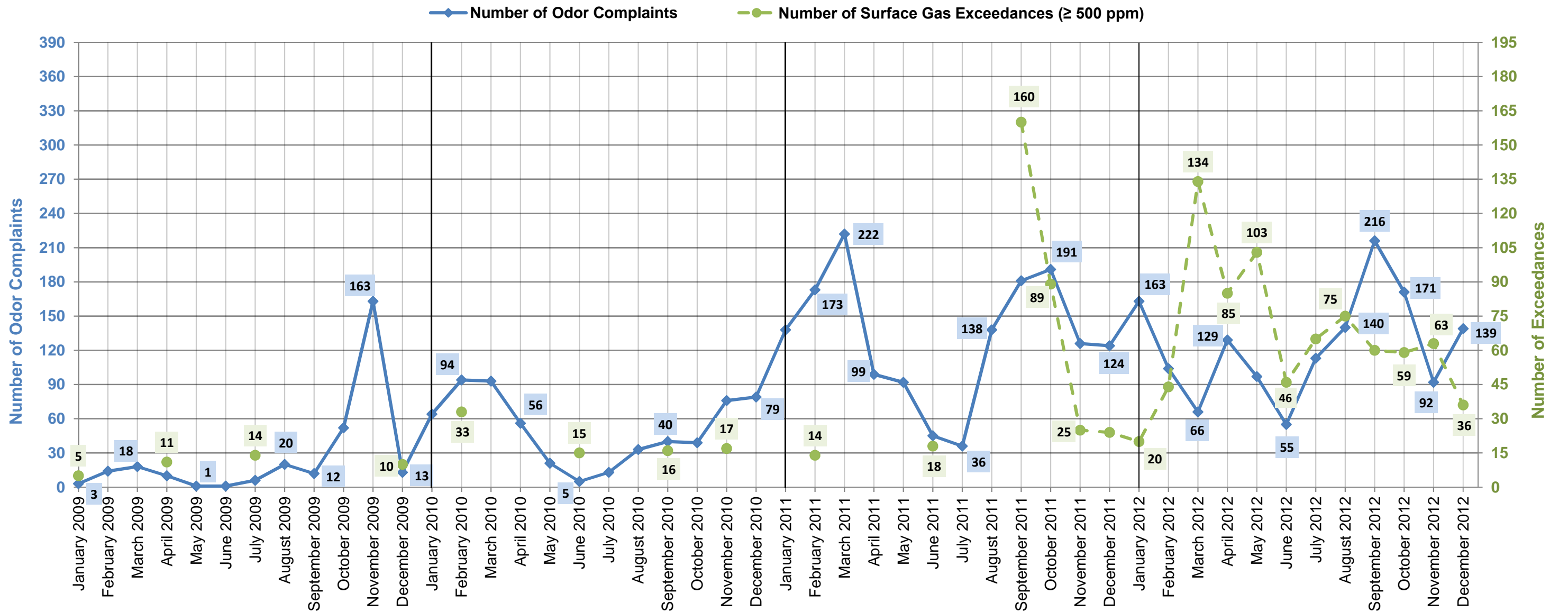
Note: 1.) Number of complaints are based on AQMD's Complaint Summary Monthly Reports.

2.) Number of Notices of Violation are based on SCAQMD's Facility Information Detail (FIND) website.

3.) Schools nearby are usually off in early June and resume around 2nd week of August.

4.) Leachate collected is based on Republic Services' Summary of Water Sources Quarterly Reports to the SCL - LEA.

Surface Gas Emissions and Number of Odor Complaints - Sunshine Canyon Landfill



Strong El Niño winds were reported.

Damage to gas collection system.

50 vertical gas wells were installed.

9-inch soil cover requirement.

Geologic movement resulted in large fissures.

54 gas wells were non-functional for several weeks.

Damaged gas line.

Construction of Cell CC2.

Construction of double liner was completed.

Temporary Flare became operational.

Two 200-HP blowers were installed at Flares 1 and 3.

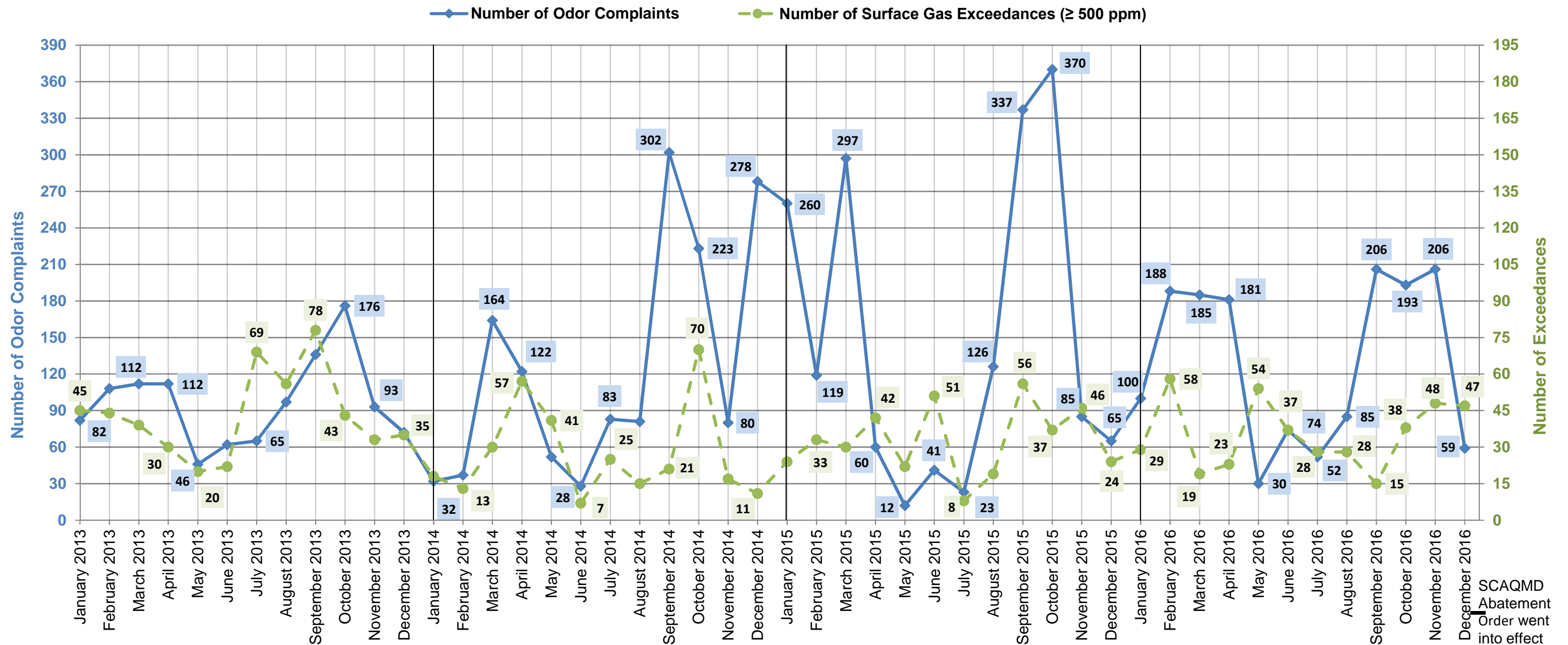
Widespread hydrogen sulfide odor event emanating from the Salton Sea occurred throughout Southern CA.

A 200-HP blower was installed at Flare 8.

50 pumps were installed in gas wells.

- Note: 1.) Number of complaints are based on AQMD's Complaint Summary Monthly Reports.
 2.) Number of Notices of Violation are based on SCAQMD's Facility Information Detail (FIND) website.
 3.) Schools nearby are usually off in early June and resume around 2nd week of August.
 4.) Leachate collected is based on Republic Services' Summary of Water Sources Quarterly Reports to the SCL.

Surface Gas Emissions and Number of Odor Complaints - Sunshine Canyon Landfill



60 vertical gas wells and 27 pumps were installed.

14 vertical gas wells installed.

Flare 10 became operational.

Gas well was damaged.

14 vertical gas wells were installed.

Ponded water, erosional rills, damaged protective soil layer, and trash exposure from a storm event were observed.

From Dec. 2013 to April 2014, 30 vertical gas wells and 25 pumps were installed.

9,500 linear feet of gas lines and 1,900 linear feet of header lines were installed.

24 vertical gas wells were installed.

July 21 - startup of the Gas-to-Energy facility commenced.

September 1 - Gas-to-Energy facility became fully operational.

29 vertical gas wells were installed, an 18-inch header was installed on the City-side, and well dewatering program was upgraded.

Trash exposure on several occasions were observed due to intense rainfall.

Nov. 3 - trash exposure was observed due to improper covering of trash from the previous Saturday evening.

11 vertical gas wells were installed.

September 16 - approx. 100' x 100' area of settlement within the existing refuse area on the City South portion observed. Remediation of the area completed the next day.

Approx. 5' (Feb 9), 20' (Mar. 18 & 23), and two 20' (April 7) flap in length of ADC material was observed due to high winds overnight.

Oct. 12 - Alternative Daily Cover Pilot Project commenced.

18 vertical gas wells were installed.

April 7 - 2" gas leak at GTE plant. Repair was completed next morning.

Nov 6 - 200 gal of liquid discharged from well 802.

Installation of 19 new gas well pumps

Aug. 24, 6 side slope collectors (CC-3B) were put into service

July 8 - 6" condensate leak near CC-3B. Repair completed by 8:30 AM

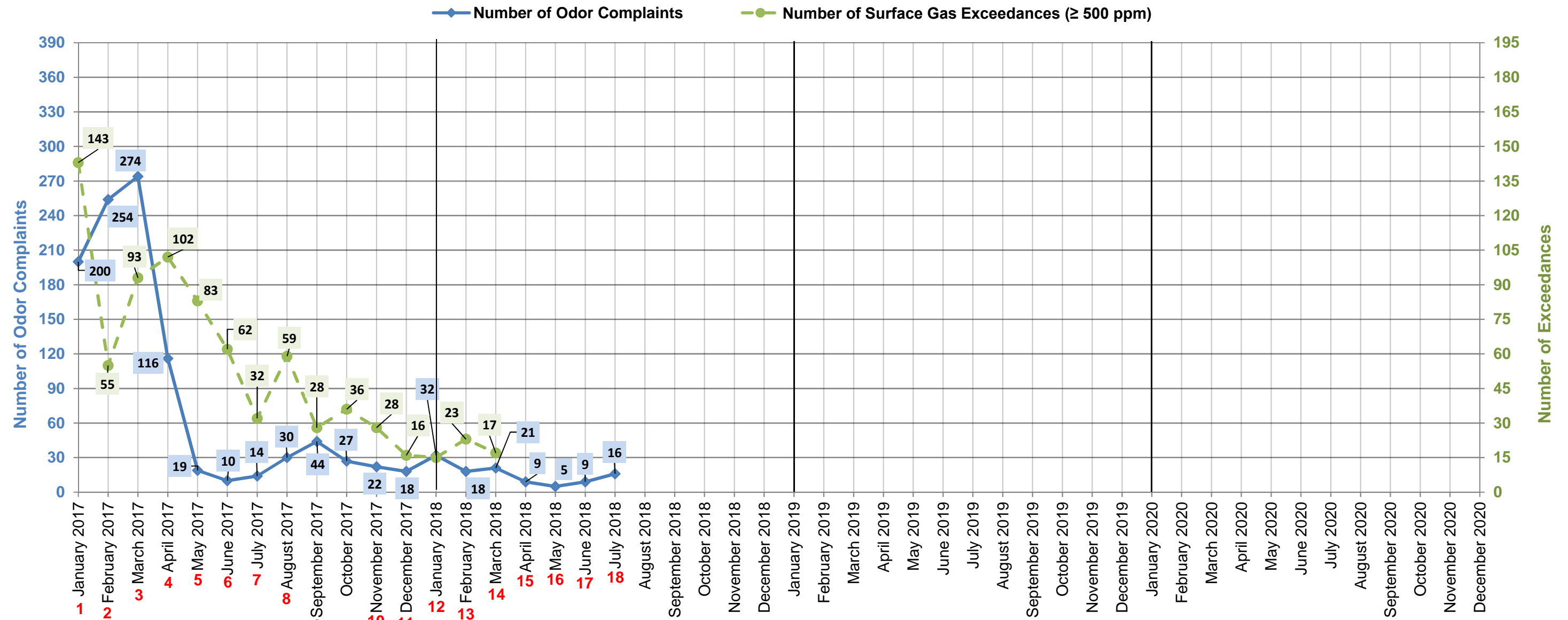
June 29 - Leaking condensate valve.

June 21 - An approx. 10' ADC panel laid over Cell-3A had lifted overnight.

June 13 to 17 - Three horizontal collectors installed in CC-3B. Liquid leak from several locations. Repairs completed same day.

Note: 1.) Number of complaints are based on AQMD's Complaint Summary Monthly Reports.
 2.) Number of Notices of Violation are based on SCAQMD's Facility Information Detail (FIND) website.
 3.) Schools nearby are usually off in early June and resume around 2nd week of August.
 4.) Leachate collected is based on Republic Services' Summary of Water Sources Quarterly Reports to the SCL - LEA.

Surface Gas Emissions and Number of Odor Complaints - Sunshine Canyon Landfill



1. Due to rain, stormwater spilled onto SF Road; Drilling of 15 vertical gas wells;

2. Continue drilling of 15 vertical gas wells; Condensate leaked from well 813 during installation of well pump.

3. Landfill rec'd trash starting from 9:00 AM; a subsurface liquid line near main haul was damage causing 3,000 gals spill on main haul road and some entered into storm drain channel.

4. As of 04/24, 100 new vertical gas wells were installed and pumps are being installed to address liquids.

5. 05/14 Gas header line leaked 200 gals discharged onto main haul road and some entered into storm drain channel and Terminal Basin (TB).

6. 06/08 a slide occurred on the western edge of the CC-4 Part 2 subgrade excavation.
- 06/22 500 gals leak from a blind flange on leachate line.

7. 07/18 Leak from a blind flange on leachate line caused 200 gals release into trench at toe of CC-3B and onto main haul road.

8. 08/16 Repair work for the landslide that occurred on 06/08 was completed.

- 08/24 LEA issued a violation for gas and monitoring control (probe registered an exceedance of over 5%)
- 08/24 A force main line was struck by a scraper near CC-4 Part 1, causing a 1,500 gals of liquid discharged.

- 08/25 A pipe ruptured causing 600 gals of dust control water to discharge into the concrete lined channel and entered the TB but contained in TB and was pumped out.

9. 9/25 Leak from a blind flange on a force main line at the toe of cell CC-3A caused a 200 gals discharge.

10. 11/2 Fernco boot on CGW-2133 dislodged off well casing causing 300 gals of liquid to release.
-11/14 Clogged pumps at the toe of cell CC-3B caused 100 gals of liquid discharg.
-11/29 Clogged pumps at the toe of cell CC-3B caused 500 gals of liquid discharge.

11. 12/1, 2, 11, 12,13 liquid seeping on the customer haul road at toe of Cell CC-4 Part 1.
-12/6 100 gals of liquid spilled from broken wellhead CGW2152.
-12/6 800 gals of liquid from the leachate tank farm spilled into containment area.

12. 1/9 ATC 27 and CGW2133 well heads dislodged causing 10 gals and 100 gals of liquid to spill.

- 1/30 GW1035D wellhead dislodged causing 200 gals of leachate spill.

- 1/31 100 gals of condensate spilled from pipe near CC-3A.
13. 2/18 Fernco connection on GW918 popped off spilling 100 gal of liquid.

14. 3/12 Fernco connection on GW3020 popped off and spilled 100 gals of liquid.
-3/23 GW 3010 spilled 500 gals of liquid during routine maintenance on pump.

15. 04/05 AHW10 (Closure Turf Area) dislodged causing 100 gals to spill.

- 04/19 CGW2046 (near Flare Station) dislodged 200 gals.

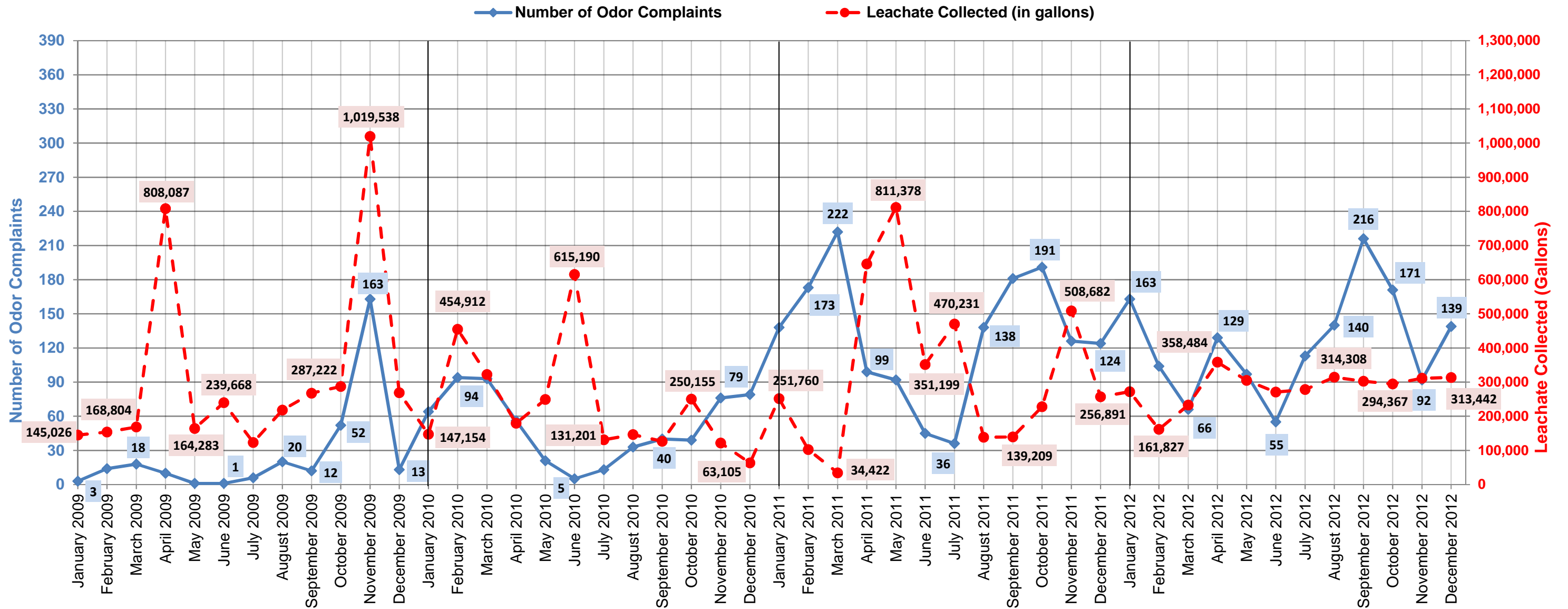
16. 05/07 20k gals of groundwater spilled into the terminal basin. Spill was contained in TB, no liquids were discharged from site. LEA and Water Board were notified.

17. 06/12 100 gals spilled from sample line at lower treatment facility.

18. 07/18 To mitigate potential spills, Republic in process of converting all Fernco wellhead connections to hard-pipe connections on wells w/pumps in CC-3A.

Note: 1.) Number of complaints are based on AQMD's Complaint Summary Monthly Reports.
2.) Number of Notices of Violation are based on SCAQMD's Facility Information Detail (FIND) website.
3.) Schools nearby are usually off in early June and resume around 2nd week of August.
4.) Leachate collected is based on Republic Services' Summary of Water Sources Quarterly Reports to the SCL - LEA.

Leachate Collected and Number of Odor Complaints - Sunshine Canyon Landfill



Strong El Niño winds were reported.

Damage to gas collection system.

50 vertical gas wells were installed.

9-inch soil cover requirement.

Geologic movement resulted in large fissures.

54 gas wells were non-functional for several weeks.

Damaged gas line.

Construction of Cell CC2.

Construction of double liner was completed.

Temporary Flare became operational.

Flare 9 became operational.

Two 200-HP blowers were installed at Flares 1 and 3.

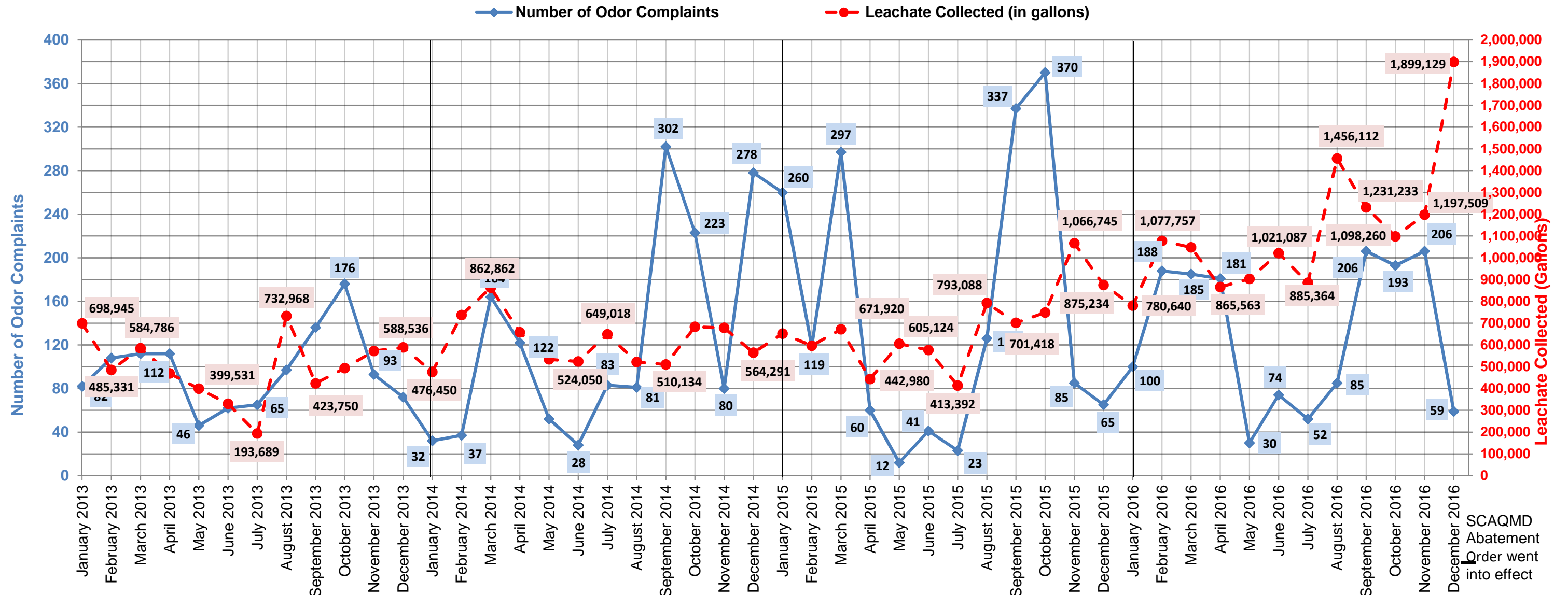
Widespread hydrogen sulfide odor event emanating from the Salton Sea occurred throughout Southern CA.

A 200-HP blower was installed at Flare 8.

50 pumps were installed in gas wells.

Note: 1.) Number of complaints are based on AQMD's Complaint Summary Monthly Reports.
 2.) Number of Notices of Violation are based on SCAQMD's Facility Information Detail (FIND) website.
 3.) Schools nearby are usually off in early June and resume around 2nd week of August.
 4.) Leachate collected is based on Republic Services' Summary of Water Sources Quarterly Reports to the SCL.

Leachate Collected and Number of Odor Complaints - Sunshine Canyon Landfill



60 vertical gas wells and 27 pumps were installed.
 14 vertical gas wells installed. Flare 10 became operational.
 Gas well was damaged.
 14 vertical gas wells were installed.
 Ponded water, erosional rills, damaged protective soil layer, and trash exposure from a storm event were observed.
 From Dec. 2013 to April 2014, 30 vertical gas wells and 25 pumps were installed.

9,500 linear feet of gas lines and 1,900 linear feet of header lines were installed.

24 vertical gas wells were installed.
 July 21 - startup of the Gas-to-Energy facility commenced.
 September 1 - Gas-to-Energy facility became fully operational.

29 vertical gas wells were installed, an 18-inch header was installed on the City-side, and well dewatering program was upgraded.
 Trash exposure on several occasions were observed due to intense rainfall.
 Nov. 3 - trash exposure was observed due to improper covering of trash from the previous Saturday evening.
 11 vertical gas wells were installed.

September 16 - approximately 100' x 100' area of settlement within the existing refuse area on the City South portion was observed. Remediation of the area was completed

18 vertical gas wells were installed.
 Oct. 12 - Alternative Daily Cover Pilot Project commenced.

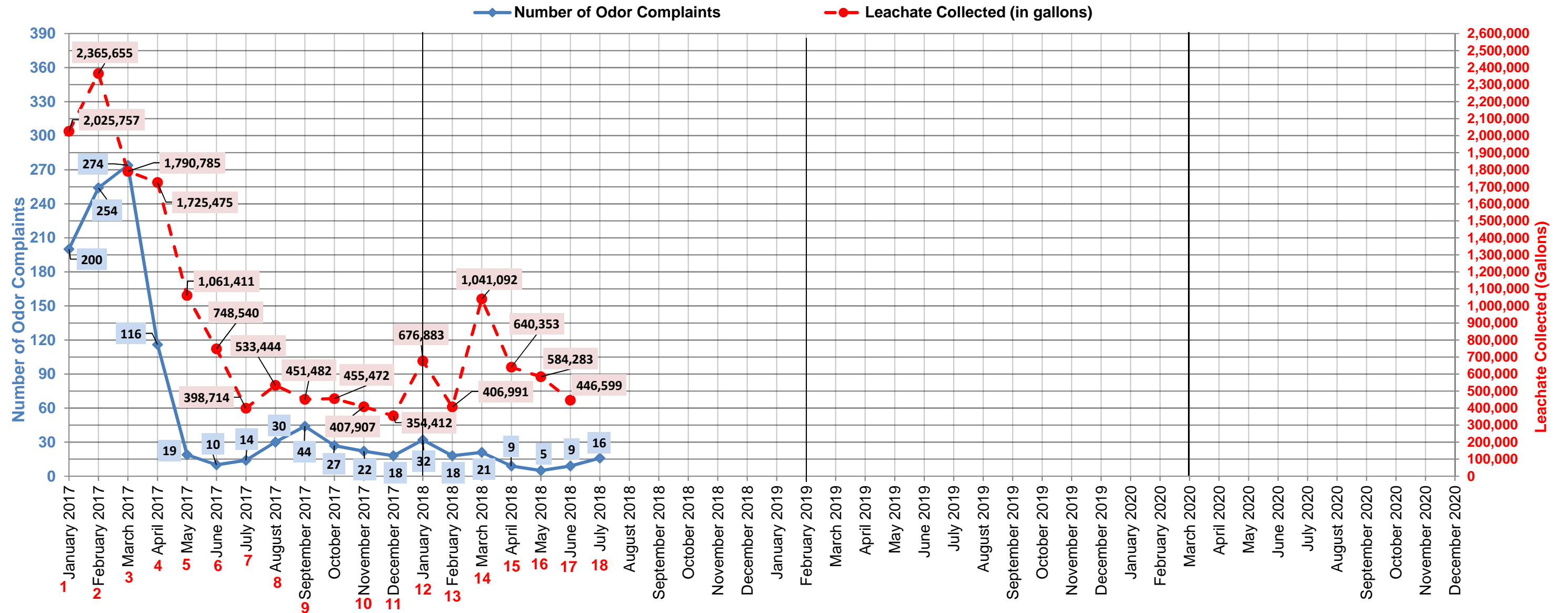
Approx. 5' (Feb 9), 20' (Mar. 18 & 23), and two 20' (April 7) flap in length of ADC material was observed due to high winds overnight.
 April 7 - 2" gas leak at GTE plant. Repair was completed next morning.

Installation of 19 new gas well pumps
 Aug. 24, 6 side slope collectors (CC-3B) were put into service
 July 8 - 6" condensate leak near CC-3B. Repair completed by 8:30 AM
 June 29 - Leaking condensate valve.
 June 21 - An approx. 10' ADC panel laid over Cell-3A had lifted overnight.
 June 13 to 17 - Three horizontal collectors installed in CC-3B.
 Liquid leak from several locations. Repairs completed same day.

Nov 6 - 200 gal of liquid discharged from well 802.

Note: 1.) Number of complaints are based on AQMD's Complaint Summary Monthly Reports.
 2.) Number of Notices of Violation are based on SCAQMD's Facility Information Detail (FIND) website.
 3.) Schools nearby are usually off in early June and resume around 2nd week of August.
 4.) Leachate collected is based on Republic Services' Summary of Water Sources Quarterly Reports to the SCL.

Leachate Collected and Number of Odor Complaints - Sunshine Canyon Landfill



- 1. Due to rain, stormwater spilled onto SF Road; Drilling of 15 vertical gas wells;
- 2. Continue drilling of 15 vertical gas wells; Condensate leaked from well 813 during installation of well pump.
- 3. Landfill rec'd trash starting from 9:00 AM; a subsurface liquid line near main haul was damage causing 3,000 gals spillo on main haul road and some entered into strom drain channel.

- 4. As of 04/24, 100 new vertical gas wells were installed and pumps are being installed to address liquids.
- 5. 05/14 Gas header line leaked 200 gals discharged onto main haul road and some entered into storm drain channel and Terminal Basin (TB).
- 6. 06/08 a slide occurred on the western edge of the CC-4 Part 2 subgrade excavation. - 06/22 500 gals leak from a blind flange on leachate line.

- 7. 07/18 Leak from a blind flange on leachate line caused 200 gals release into trench at toe of CC-3B and onto main haul road.
- 8. 08/16 Repair work for the landslide that occurred on 06/08 was completed.
 - 08/24 LEA issued a violation for gas and monitoring control (probe registered an exceedance of over 5%)
 - 08/24 A force main line was struck by a scraper near CC-4 Part 1, causing a1,500 gals of liquid discharged.
 - 08/25 A pipe ruptured causing 600 gals of dust control water to discharge into the concrete lined channel and entered the TB but contained in TB and was pumped out.

- 9. 9/25 Leak from a blind flange on a force main line at the toe of cell CC-3A caused a 200 gals discharge.
- 10. 11/2 Fernco boot on CGW-2133 dislodged off well casing causing 300 gals of liquid to release.
 - 11/14 Clogged pumps at the toe of cell CC-3B caused 100 gals of liquid discharg.
 - 11/29 Clogged pumps at the toe of cell CC-3B caused 500 gals of liquid discharge.
- 11. 12/1, 2, 11, 12,13 liquid seeping on the customer haul road at toe of Cell CC-4 Part 1.
 - 12/6 100 gals of liquid spilled from broken wellhead CGW2152.
 - 12/6 800 gals of liquid from the leachate tank farm spilled into containment area.

- 12. 1/9 ATC 27 and CGW2133 well heads dislodged causing 10 gals and 100 gals of liquid to spill.
 - 1/30 GW1035D wellhead dislodged causing 200 gals of leachate spill.
 - 1/31 100 gals of condensate spilled from pipe near CC-3A.
- 13. 2/18 Fernco connection on GW918 popped off spilling 100 gal of liquid.
- 14. 3/12 Fernco connection on GW3020 popped off and spilled 100 gals of liquid.
 - 3/23 GW 3010 spilled 500 gals of liquid during routine maintenance on pump.

- 15. 04/05 AHW10 (Closure Turf Area) dislodged causing 100 gals to spill.
 - 04/19 CGW2046 (near Flare Station) dislodged 200 gals.
- 16. 05/07 20k gals of groundwater spilled into the terminal basin. Spill was contained in TB, no liquids were discharged from site. LEA and Water Board were notified.
- 17. 06/12 100 gals spilled from sample line at lower treatment facility.
- 18. 07/18 To mitigate potential spills, Republic in process of converting all Fernco wellhead connections to hard-pipe connections on wells w/pumps in CC-3A.

Note: 1.) Number of complaints are based on AQMD's Complaint Summary Monthly Reports.
 2.) Number of Notices of Violation are based on SCAQMD's Facility Information Detail (FIND) website.
 3.) Schools nearby are usually off in early June and resume around 2nd week of August.
 4.) Leachate collected is based on Republic Services' Summary of Water Sources Quarterly Reports to the SCL.